



---

# HELPING THE NHS GO FURTHER

---

ANNUAL REPORT  
2021



NHS  
CHARITIES  
TOGETHER

1	Message from our Chair
2	Message from our Chief Executive
4	About us
6	Highlights of the year
10	Our strategy
12	Our vision, mission and strategic objectives
14	Our network grows stronger
16	Summary of grants awarded in 2021
22	What we've achieved together
24	Caring for NHS staff
26	Improving services for patients
28	Tackling the wider determinants of ill health
30	Looking forward
32	The NHS can't face every challenge alone
34	Our future strategy
36	All because of you
38	Financial statements
40	Structure, governance and management
44	Consolidated financial statements
50	Notes to the financial statements

MESSAGE FROM OUR CHAIR  
IAN LUSH, OBE



## GOING FROM STRENGTH TO STRENGTH, TOGETHER

Welcome to our annual report for 2021, marking yet another extraordinary year for the NHS and the network of NHS charities.

Throughout the year we have continued to represent **100%** of the NHS charity sector which has gone from strength to strength, spending over one million pounds a day together to help the NHS go further at the most challenging of times.

Following the success of NHS Charities Together's record breaking Covid appeal we have continued to get donations to where they are needed most, funding projects to support staff, patients and volunteers in every Trust and Health Board in all corners of the UK. Thanks to generous donations to the Covid appeal, we awarded a further **£44 million** through the network of NHS charities during the year.

A new strand to our work has included **seven million pounds** made available to the ambulance service, to fund training and equipment for community first responder volunteers, who are often the first to arrive in an emergency. This has supported the wider health service and helped to save lives.



# £44m

Awarded through the network of NHS charities

# 325

Community organisations funded through our stage 2 grants

In particular, we have funded **325 community projects** through our community partnership grants, with lead member NHS charities acting as a convenor with the local voluntary sector and helping to tackle the wider determinants of ill health like isolation, loneliness and poor mental health. Other projects have included bereavement support for patients and investment in Long Covid research.

And we have continued to be there for the **NHS workforce**, funding rest spaces, infrastructure and mental health interventions to support a workforce facing exhaustion and burnout, having given so much to care for us all over the last two years.

There have been other incredible highlights, like the **NHS Big Tea at Buckingham Palace** hosted by our Royal Patron HRH The Duke of Cambridge, to thank NHS staff for their ongoing sacrifices.

And the public has continued to be there too. In our first year of fundraising outside of the Covid appeal our small team worked hard to generate a further **£11 million** which will support our ongoing strategic goals to support the NHS through the challenges it may face and to make the most of opportunities for innovation and

improvement.

As always my thanks goes to the **dedicated team** of staff at NHS Charities Together who moved us forward over the last year, to the member NHS charities who achieved so much for patients and staff in their areas, to the supporters and partners who make our work possible and to my fellow Trustees who volunteer their time to ensure robust governance of the organisation. I would also like to give particular thanks to the members of the Grants Advisory and Review Panel who have volunteered generously of their time and expertise to provide external and independent scrutiny of our community partnership grants.

**None of the achievements of the last year would be possible without this collective working across every part of the UK. I firmly believe that the 'together' in our name is where our strength lies - I am proud to be part of it and look forward to growing stronger together over the coming year.**



**“What’s clear is that the NHS and workforce will continue to face the pressures brought by Covid-19 and, what’s more, that those challenges that existed before the pandemic haven’t gone away.”**

Photo credit: Imperial Health Charity

**MESSAGE FROM  
OUR CHIEF EXECUTIVE  
ELLIE ORTON, OBE**



## **BEYOND COVID: THE NHS NEEDS US MORE THAN EVER**

It’s been another whirlwind year for NHS Charities Together – as for every other organisation working in health and social care in these challenging times.

There has been so much hard work from NHS charities across the UK and within the NHS Charities Together team, and so much incredible support from our partners and thousands of supporters.

Together we have demonstrated a solid ongoing bedrock of support for the NHS and its workforce, showing longevity way beyond the incredible outpouring during the peak of the pandemic and our record breaking Covid appeal. We were proud to award a further £44 million in grants during 2021 to reach NHS trusts and health boards across the UK and to support patients, staff and volunteers.

Following our transformation in 2020, when we were thrust into the limelight thanks to generous support from the public, we have continued to reflect and consult with the NHS charity network and stakeholders to understand our future strategy and how best we can help the NHS go further for years to come.

What’s clear is that the NHS and workforce will continue to face the pressures brought by Covid-19 and, what’s more, that those challenges

that existed before the pandemic haven’t gone away - from an aging population, increasing long term conditions and now, inevitably, waiting lists that are longer than ever.

And sadly, with even more economic and political turmoil being experienced across the globe, every challenge for the NHS is being exacerbated. The key strands of our strategy are around facilitating NHS charities to grow in strength, to provide ongoing support for the NHS workforce and to help prevent ill health for patients and communities working with the wider voluntary sector.

Thank you to everyone who has been part of our collective achievement over the last year. We look forward to working with member NHS charities and partners across the sector for the coming year as we take forward our strategy. Our message to NHS Trusts and Health Boards is that NHS charities can be true strategic partners to help you through the challenging times ahead. Our message to the NHS workforce and to our supporters is that we will continue to be there whatever it takes.



## ABOUT US

NHS Charities Together is the national, independent charity caring for the NHS, providing the extra support that's needed to care for staff, patients and improve health in our communities.

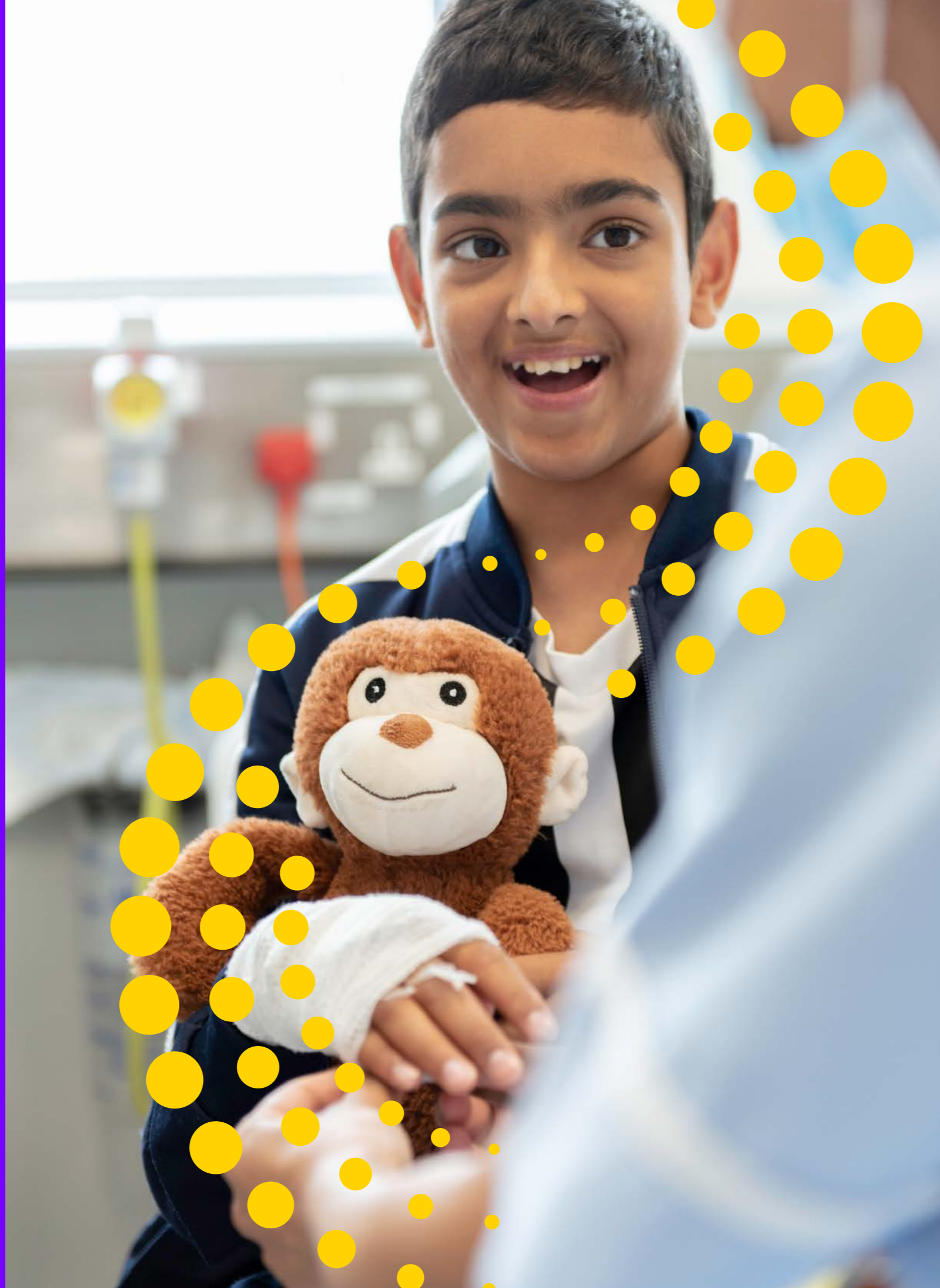
Working with a network of over 230 NHS charities across the UK representing hospitals, ambulance trusts, mental health trusts and community health services - we ensure that money raised reaches the people that need support most, in every part of the country.

We also help strengthen the NHS charity sector, providing support for member charities through nationwide fundraising, networking opportunities, and training, as well as showcasing nationally the role of the NHS charity sector.

Together, we all play a part in supporting our NHS to go further, now and for generations to come.



Charities make up our network



# £1m

Amount given by NHS charities every day

## ABOUT THE NHS CHARITY MEMBERSHIP

People have been donating money to health services since well before the NHS was created. The 230 plus member charities of NHS Charities Together are based in hospitals, ambulance trusts, mental health trusts, community health trusts and health boards across the UK.

These charities give more than one million pounds everyday to the NHS so that people can stay well for longer and get better faster. Most of them focus on helping our health services to do more. From supporting research and innovations, to brightening up hospital environments, and donating state-of-the-art technologies and equipment, the charities raise funds and mobilise volunteers, touching lives and making a huge difference to millions of people when they are at their most vulnerable. During the Covid-19 pandemic this focus has shifted to supporting immediate practical and emotional needs of staff and patients and helping to take pressure off an overstretched health service.

## HIGHLIGHTS OF THE YEAR

In another challenging year, our supporters helped the NHS provide the extra support that made all the difference. Here are some of the incredible things you made possible.

### JANUARY



Photo credit: Gareth Jones

We kicked off the year by **making Liverpool Football Club Captain Jordan Henderson our official Charity Champion**, recognising his outstanding work bringing footballers together for the NHS as part of #PlayersTogether.

Jordan said: **"I'll do what I can to shine a light on the amazing work NHS charities do to support the NHS."**



We were delighted that **NHS Charities Together's Chair Ian Lush**, who is also Chief Executive of Imperial Health Charity, was **awarded an OBE in the New Year Honours list for charitable services to the NHS.**



### FEBRUARY

In February, **we paid tribute to the truly inspirational Captain Sir Tom Moore** following the sad news of his death. As we remembered this extraordinary man, we celebrated how the £39 million he raised and the countless donations he inspired were having an impact for NHS patients and staff.

### MARCH



As spring sprung, we announced **£7 million of support for ambulance Community First Responders** and other volunteers to ease the pressure on overstretched ambulance crews. Later in the month, staff from eight NHS

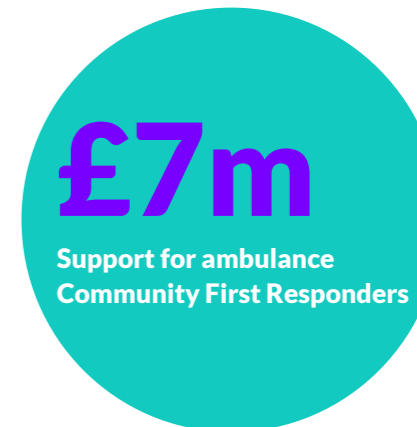
trusts were amazed to receive a phone call from our Royal Patron HRH The Duke of Cambridge to hear about projects funded by NHS charities across the UK.

Dr Dan Menzies, a Respiratory Medicine Consultant in Ysbyty Glan Clwyd, said: **"It was great to see first-hand the enthusiasm and interest that HRH The Duke of Cambridge has in the impact of NHS Charities Together and the wellbeing of patients and NHS staff."**

### MAY

The NHS hit the stage, as pop stars **Rag'n'Bone Man and P!nk** joined the Lewisham & Greenwich NHS Choir at the BRIT Awards to **perform their single 'Anywhere Away From Here' in support of NHS Charities Together** and the Lewisham and Greenwich NHS Charity.

Also in May, our joint Royal Patrons Their Royal Highnesses **The Duke and Duchess of Cambridge hosted staff from the NHS** in Scotland at a unique drive-in cinema screening of Disney's Cruella at the Palace of Holyroodhouse. The deserving guests were nominated by member charities and their associated Health Boards in recognition of their incredible efforts through this challenging period.



### APRIL

We wasted no time in launching our **'Be There for Them' appeal**, as the scale of the impact of the pandemic on the **mental health of NHS staff** was revealed. We were all shocked to hear over half the staff surveyed reported that their mental health had declined, with anxiety and depression widespread. Your generous donations allowed us to continue to support wellbeing programmes and facilities, from rest spaces to counselling sessions, for the NHS workforce making enormous sacrifices to care for us.



## JUNE

The England men's football team and some of the nation's most well-known celebrities raised a 'Big Mug of Thanks' for everything NHS staff had done through a tough winter and over the pandemic.

Our CEO, Ellie Orton, was delighted to be awarded an OBE in the Queen's Birthday Honours List, for services to the NHS during Covid-19. She accepted the Honour on behalf of our staff, trustees and partners who worked so tirelessly to get donations straight to the frontline of the NHS. Our Charity Champion, Jordan Henderson, was also awarded an MBE in recognition of his support of the NHS with #PlayersTogether.

We proudly announced another **£4.8 million** for NHS charities across the UK from our Covid appeal, to fund more than 85 projects supporting NHS staff and communities.

**£4.8m**

for 85 projects in June



## AUGUST



Things got creative in the summer holidays, with the launch of **Gratitude in Art, a free-**

**to-visit installation** bringing together 51 human form sculptures into a beautiful and thought-provoking scene, in support of NHS Charities Together. The unique sculptures were lovingly decorated by artists and sponsored by businesses to acknowledge our key workers during this extraordinary moment in time, while raising vital funds.

## JULY

As the sun shone, thousands of people across the UK signed up to host tea parties – in person and virtually – as part of the **NHS Big Tea to support NHS staff and celebrate the NHS's 73rd birthday**. We were delighted to work with NHS charities to arrange tea parties in in hospitals, schools, care homes and businesses. **And a tea party like no other was hosted by our Joint Royal Patron HRH The Duke of Cambridge at Buckingham Palace** to thank NHS staff across the UK for their incredible contributions.



Our Joint Royal Patron HRH The Duke of Cambridge meets NHS staff at the NHS Big Tea at Buckingham Palace, joined by our chief executive Ellie Orton

We continued to tackle the hidden health impacts of the pandemic, with **projects to address isolation and loneliness**. These included helping community charities continue their vital work supporting vulnerable individuals and at-risk groups, to ease pressures on the NHS, improve access to quality care, and reduce health inequalities.

## SEPTEMBER

We embraced the opportunity to dress up in our smartest attire for The Sun's **Who Cares Wins Awards**, in partnership with Channel 4. We were delighted to be the official charity partner for the event, which was attended by our Joint Royal Patron The Duke of Cambridge, and which celebrated the incredible achievements of the NHS workforce. The nominees and their families joined celebrity and VIP guests at London's Roundhouse for an unforgettable evening celebrating the people who have got us through one of the most difficult periods in living memory.

During September we also launched our **new five year strategy for 2022 to 2026**, outlining our vision and strategic goals to help the NHS charity sector go further for staff, patients and communities.

## OCTOBER



Your donations to our **Covid-19 Urgent Appeal** helped the NHS prepare for another challenging winter. We announced a further **£5.7 million to support Covid recovery and community partnership projects** bringing genuine change for people across the UK.

Our latest research showed **eight in 10 NHS staff surveyed believe increasing pressures on NHS services are as concerning as the peak of the Covid-19 pandemic**. To highlight these challenges and show how your donations were helping staff, patients and volunteers to access extra support we launched our emotionally charged film 'Every NHS Moment'.

## NOVEMBER

To see first-hand how money raised through **#PlayersTogether** was already making a difference to local communities, **Jordan Henderson spent a day visiting staff at Liverpool University Hospitals**. Jordan said: "It's reassuring to see some of the workforce getting proper support, but we can't get complacent – and must continue to care for them like they care for us."

In partnership with the Department for Digital, Culture, Media and Sport (DCMS), we proudly **launched a £1.1 million fund** to make NHS volunteering opportunities accessible to a more diverse range of young people, including those facing socio-economic disadvantages, people from diverse ethnic backgrounds, and young people with disabilities.

ICU nurse Kate Lynes discussed the challenges facing NHS staff with our charity champion Jordan Henderson.



Photo credit: Gareth Jones

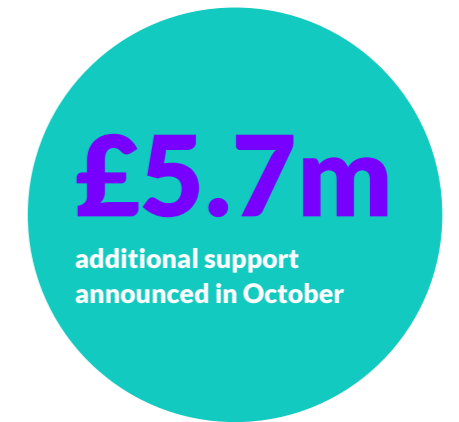


Photo credit: Damien McFadden

## DECEMBER

We launched an appeal to our supporters highlighting the ongoing challenges facing NHS staff, and partnered with *The Sun* on our **'Joy to the Ward' Christmas Appeal**, to highlight the vital work NHS charities do to help children and young people.

We were delighted to share a special festive thank you message with NHS staff on behalf of our Joint Royal Patrons.

During the message they said, **"The dedication and commitment of all NHS staff has been awe-inspiring... You have cared for incredibly sick patients and their families, in circumstances made all the more challenging by this virus, and your unending compassion has meant so much in the darkest moments."**

The Duke and Duchess of Cambridge

# OUR STRATEGY

During 2021, following widespread consultation with member NHS charities and stakeholders across the sector, we were pleased to announce our five-year strategy for 2022-2026, outlining five main objectives.





**Our vision:  
Helping the NHS  
tackle today's  
challenges and  
tomorrow's  
opportunities.**

**OUR  
STRATEGY**

**OUR VISION, MISSION AND  
STRATEGIC OBJECTIVES**

**Our vision is:** Helping the NHS tackle today's challenges and tomorrow's opportunities.

**Our mission is:** With our NHS charity members, we are here for the people of the NHS – staff, patients and their families – as a catalyst and convenor of ideas, programmes and partnerships that help the NHS recover from the impact of Covid-19, reduce health inequalities and help to save lives.

**TO ACHIEVE THIS, WE HAVE FIVE  
STRATEGIC OBJECTIVES:**

**1** To champion, influence and invest in NHS strategies that improve the health and wellness of NHS people, staff and volunteers, and reduce health inequalities in the workforce



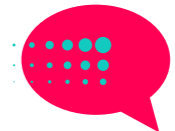
**2** To empower the NHS charity sector to be high performing, effective and impactful



**3** To be a catalyst and convenor of partnerships between the NHS, NHS charities and the wider voluntary health sector to advance great ideas that prevent ill health and improve long-term health conditions for patients and families



**4** To promote understanding of and increase charitable giving in the NHS and demonstrate the difference this makes



**5** To be a financially sustainable, responsive, and well governed organisation that values and develops our staff, actively practising the principles of equity, diversity, and inclusion





## OUR NETWORK GROWS STRONGER

In 2021, the network of more than 230 NHS charities came together with more passion and energy than ever, to help the NHS go further during a time of extreme pressure on services.

Thanks to the engagement of members across the country, we went from strength to strength in 2021, with more best practice sharing, collaboration, and opportunities to have a collective voice than ever before.

Across all the nations of the UK, together we proudly supported 100% of the eligible hospital, mental health, ambulance and community health services.

### OUR AMBITIOUS GOAL

The 230 plus NHS charities together give £1 million every day to help the NHS go further, making the network one of the biggest voluntary health funders.

Our new five-year strategy includes our ambition to help to continue to grow as an NHS charity sector.

We will achieve this by continuing to develop our membership offer, launching our membership charter, creating opportunities for fundraising, networking and best practice sharing, and providing training, advice and advocacy support.

We also help to raise the profile of NHS charities on the national stage, through national campaigns and influencing stakeholders.

By continuing to listen to and support members, we will keep collaborating for even bigger impact. Our aim is to ensure that NHS charities are recognised as a key strategic partner and to develop NHS charities' resilience and fitness for the future.

For more on our future strategy see pages 34 to 35.

### A SUMMARY OF OUR WORK WITH NHS CHARITIES THIS YEAR

With the ongoing restrictions, much of the network support in 2021 took place online, through webinars and virtual meetings, with face-to-face events and training happening where possible.

An amazing 1,532 members and external professionals attended our 20 webinars on subjects including charity governance and legacy, Facebook and corporate fundraising. Overall 95% rated the experience 'good' or 'excellent'.

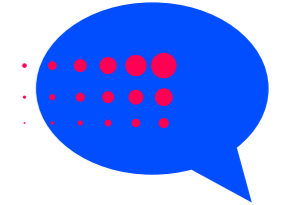
We provided regular peer-to-peer support through 14 regional groups and four special interest groups. In this way we connected hundreds of charity NHS staff who met regularly to discuss challenges, share resources and collaborate on new solutions.

And in April we launched a new digital community 'Member Connect', an online service enabling members to share resources and recommendations and offer each other support. By the end of year, the service had been used by 92% of member organisations.

During the year we delivered training in a range of topics to facilitate working effectively within the NHS, in fundraising, governance and mentoring.

**95%** 

of members rated our webinars good or excellent



# 1,532

members and external professionals attended our webinars

**“The Engaging with Clinicians course was well structured and expertly delivered... I learnt a lot... It was great to learn from others and to see how they have implemented their learning by continuing to share after the course.”**

Sofia Sheikh, Raise, West Hertfordshire Hospitals Charity

### SHOWCASING THE WORK OF NHS CHARITIES

In 2021, we stepped up our role in helping to increase understanding about NHS charities and our collective impact. This included promoting our work with stakeholders in government and the NHS, and organising national campaigns to showcase the work of member NHS charities through national media and other channels.

We were honoured to be able to work with our Joint Royal Patrons TRHs The Duke and Duchess of Cambridge to arrange visits and events involving more than 50 member charities and associated NHS trusts.

And we were proud to coordinate the biggest NHS Big Tea yet, a fundraising campaign, which engaged member charities and thousands of supporters across the nations in raising over half a million pounds in extra funds for the NHS workforce.

## SUMMARY OF GRANTS AWARDED IN 2021

In March 2020 we launched our Covid-19 Urgent Appeal. The appeal went on to raise £157 million to support patients, NHS staff and volunteers at the frontline of the coronavirus crisis.

Our membership covers 100% of the NHS charities for health boards, hospitals, and ambulance, community and mental health trusts, which means donations to the appeal have been able to reach staff, patients and volunteers in every part of the UK.

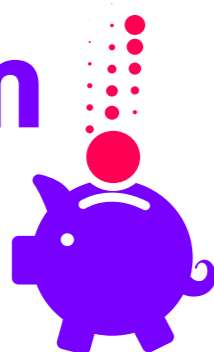
By the end of 2021 we had made available a total of £128 million and awarded a total of £92 million to member charities from the Covid appeal. We continued to distribute donations from the appeal to NHS charities, awarding a further £44 million in grants during 2021 on top of the £48 million granted in 2020.

Grants were awarded with a shift in focus from urgent and emergency response to supporting community projects and helping with the longer-term recovery of the NHS.

As part of our grants programme we have worked with member charities to fund more than 325 community projects, helping to tackle the wider determinants of ill health and prevent hospital admission, taking pressure off the wider health service.

**£128m**

from Covid appeal made available by the end of 2021



### HOW OUR GRANTS HAVE HELPED

Ongoing support for the NHS workforce continued to be an important strand of our grant giving, with a focus on meeting people's practical needs, and providing wellbeing spaces and therapies to support their mental health.

A new aspect of our work involved funding for training and recruiting an army of Community First Responder volunteers to support the ambulance service, plus specialist equipment to save lives in an emergency.

For patients, we continued to help address isolation, provide bereavement support, fund specialist equipment, and to use technology to improve access to services. Other projects focused on improving hospital discharge so that patients can return home quickly. And grants were used to invest in innovations and research, like new treatments for Long Covid.

Working with the wider voluntary sector, we funded groups and projects tackling isolation and loneliness, and to improve fitness and general wellbeing. We also funded projects with a focus on supporting those patients and staff disproportionately affected by Covid and tackling health inequalities.

“For patients, we continued to help address isolation, provide bereavement support, fund specialist equipment, and to use technology to improve access to services.”

**£44m**

awarded to member charities during 2021



Table 1: Total grants awarded to NHS charities in each region and nation

NHS Region	Grants Awarded 2020 £	Grants Awarded 2021 £	Total Grants Awarded £
East of England	4,305,860	4,682,954	8,988,814
London	7,047,644	7,320,127	14,367,771
Midlands	7,201,115	8,023,207	15,224,322
National	176,100	62,500	238,600
North East England and Yorkshire	7,433,700	5,298,951	12,732,651
North West England	5,544,855	4,045,533	9,590,388
South East England	5,383,856	6,272,651	11,656,507
South West	4,686,100	3,333,342	8,019,442
Northern Ireland	806,100	589,473	1,395,573
Scotland	3,590,669	3,196,532	6,787,201
Wales	1,713,900	1,260,508	2,974,408
	<b>47,889,899</b>	<b>44,085,778</b>	<b>91,975,677</b>

Table 2: Grants awarded by grant programme

Grant Programme	Grants Awarded 2020 £	Grants Awarded 2021 £	Total Grants Awarded £
Covid urgent and emergency grants	39,745,788	2,117,000	41,862,788
Community partnership grants	1,415,700	22,424,795	23,840,495
Recovery grants	6,176,511	14,916,615	21,093,126
Ambulance grants	-	4,604,868	4,604,868
Other grants	551,900	22,500	574,400
	<b>47,889,899</b>	<b>44,085,778</b>	<b>91,975,677</b>

**Table 3: List of grants awarded by charity**

Charity Name	Grants Awarded 2020 £	Grants Awarded 2021 £	Total Awarded £
Bristol & Weston Hospitals Charity Bristol	462,100	489,513	951,613
Addenbrooke's Charitable Trust	214,100	140,098	354,198
Aintree University Hospital Charitable Fund (merged with R Charity)	35,000	-	35,000
Airedale Hospital & Community Charity	161,600	-	161,600
Alder Hey Children's Charity	140,100	1,275,265	1,415,365
Aneurin Bevan Health Charity	235,100	-	235,100
Ashford and St Peter's Hospitals' NHS Charitable Fund	165,100	101,500	266,600
Awyr Las (Blue Sky) Charity (Betsi Cadwaladr University Health Board)	266,600	49,000	315,600
Ayrshire and Arran Health Board Endowment	463,600	175,788	639,388
Barking, Havering and Redbridge University Hospitals NHS Trust Charity Fund	188,100	154,000	342,100
Barnet, Enfield and Haringey Mental Health NHS Trust Charity	111,600	50,000	161,600
Barnsley Hospital Charity	165,100	-	165,100
Barts Charity	294,600	363,000	657,600
Bay Hospitals Charity (Cumbria)	186,100	-	186,100
Bedford Hospital NHS Trust Charitable Fund (previously Bedford Hospital Charity & Friends)	56,000	-	56,000
NI Belfast Health and Social Care Trust Charitable Fund	184,100	-	184,100
Berkshire Health Charitable Fund Buckinghamshire	168,600	-	168,600
Better Lives Charity (Bradford District)	158,100	77,000	235,100
Birmingham Community Healthcare NHS FT General Charity	282,100	-	282,100
Birmingham Women's and Children's Hospital Charity	181,100	132,000	313,100
Black Country Healthcare Charity Fund	165,100	-	165,100
Blue Skies Hospitals Fund (Blackpool Teaching Hospitals)	186,100	-	186,100
Bolton NHS Charitable Fund	184,600	143,000	327,600
Bournemouth Hospital Charity	282,100	-	282,100
Bradford Hospitals' Charity	182,600	-	182,600
Brighter Futures (Great Western Hospitals NHS Foundation Trust Charitable Fund)	218,900	-	218,900
Brighterway (Southern Health Charity)	179,100	-	179,100
BSUH Charity (Brighton and Sussex University Hospitals Charity)	196,600	196,956	393,556
Buckinghamshire Healthcare NHS Trust Charitable Fund	182,600	1,020,817	1,203,417
Calderdale and Huddersfield NHS Charity	179,100	-	179,100
Cambridgeshire Community Services NHS Trust Charitable Fund	104,600	50,000	154,600
Cardiff and Vale Health Charity	245,600	415,796	661,396
Caring Minds (Birmingham and Solihull Mental Health NHS FT Charity)	168,600	-	168,600
Central and North West London NHS FT Charitable Fund	207,100	107,661	314,761
Central London Community Healthcare NHS Trust Charity	165,100	74,320	239,420
Cheshire and Wirral Partnership NHS FT General Fund	126,482	50,000	176,482
Chesterfield Royal Hospital Charity	167,100	-	167,100
Childrens Hospital Charity, The (Sheffield)	137,100	77,000	214,100
Christie Charitable Fund, The (Manchester)	163,600	77,000	240,600
Clatterbridge Cancer Charity, The	147,600	33,000	180,600
Colchester & Ipswich Hospitals Charity	207,100	710,086	917,186
Cornwall Partnership Foundation Trust Charitable Fund	161,600	-	161,600
Countess of Chester Charity, The	227,467	40,133	267,600
County Durham and Darlington NHS FT Charity	356,600	-	356,600
Croydon Health Services Charitable Fund	165,100	88,000	253,100
Cumbria, Northumberland, Tyne and Wear FT Charity	186,100	-	186,100
CW+ Charity (Chelsea and Westminster)	182,600	1,304,983	1,487,583
Cwm Taf Morgannwg NHS General Charitable Fund	171,100	-	171,100
Derby and Burton Hospitals Charity	216,600	246,145	462,745
Derbyshire Community Health Services Charitable Trust, The	189,600	490,086	679,686
Devon Partnership NHS Trust Special Charity	161,600	77,000	238,600
Difference, The (Borders Health Board Endowment Funds)	61,600	181,008	242,608
Doncaster and Bassetlaw Hospitals NHS Foundation Trust Charitable Funds	188,600	-	188,600
Dorset County Hospital Charity	158,100	35,643	193,743
Dorset HealthCare Foundation Trust Charitable Fund	179,100	105,746	284,846
Dudley Group NHS FT Charity	172,100	121,000	293,100
Dumfries & Galloway Health Board Endowment Fund	263,569	82,969	346,538
East and North Hertfordshire Hospitals Charity	324,100	-	324,100
East Cheshire NHS Trust Charitable Fund	158,100	-	158,100
East Kent Hospitals Charit	203,600	220,000	423,600
East Midlands Ambulance Service Trust Charity	165,100	511,715	676,815

Charity Name	Grants Awarded 2020 £	Grants Awarded 2021 £	Total Awarded £
East of England Ambulance Service Charity	75,600	558,689	634,289
East Sussex Healthcare NHS Trust Charitable Fund	189,600	165,000	354,600
Edinburgh & Lothians Health Foundation	1,028,700	158,926	1,187,626
ELHT&Me (East Lancashire)	200,100	209,000	409,100
Epsom and St Helier NHS Trust Charitable Fund	179,100	-	179,100
Essex Partnership University NHS Foundation Trust Charitable Fund	172,100	42,000	214,100
EyUp! (South West Yorkshire)	168,600	98,967	267,567
Fife Health Charity	152,100	312,332	464,432
Forever Friends Appeal (Royal United Hospitals Bath), The	175,600	111,097	286,697
Forth Valley Giving	136,100	-	136,100
Frimley Health Charity	640,956	178,213	819,169
Gateshead Health NHS Foundation Trust Charitable Fund (QE Charity)	282,100	-	282,100
George Eliot Hospital Charity	154,600	-	154,600
Gloucestershire Care Services NHS Trust Charities	172,100	99,000	271,100
Great Ormond Street Hospital Children's Charity	232,100	50,000	282,100
Greater Manchester Mental Health NHS FT Charitable Fund	75,600	50,000	125,600
Guy's and St Thomas' Charity	641,100	931,163	1,572,263
Hampshire Hospitals Charity	182,600	-	182,600
Harrogate Hospital and Community Charity	172,100	110,000	282,100
Head to Toe (Cambridgeshire and Peterborough NHS Foundation Trust)	168,600	47,800	216,400
Headlight (Avon and Wiltshire Mental Health Partnership Charitable Fund)	168,600	-	168,600
Heads On (Sussex Partnership Charity)	172,100	833,147	1,005,247
Health Stars (Humber)	158,100	-	158,100
Health Tree Foundation (Northern Lincolnshire & Goole)	182,600	205,375	387,975
Hertfordshire Community NHS Trust Charitable Fund	506,260	406,000	912,260
Hertfordshire Partnership NHS Foundation Trust Charitable Fund	61,600	50,000	111,600
Highland Health Board Endowment Funds	107,100	50,000	157,100
Hillingdon Hospitals Charity	161,600	-	161,600
Homerton Hospital Charitable Fund	165,100	771,173	936,273
Hounslow and Richmond Community Healthcare NHS Trust Charitable Fund	97,600	50,000	147,600
Hywel Dda Health Charities	244,600	279,500	524,100
Imperial Health Charity	503,600	-	503,600
Isle of Wight NHS Charitable Funds	61,600	50,000	111,600
James Paget University Hospitals Charitable Fund	161,600	77,000	238,600
Kent Community Health Charity (I Care)	72,100	50,000	122,100
Kettering General Hospital Charity Fund	170,600	99,000	269,600
King's College Hospital Charity	224,600	286,000	510,600
Kingston Hospital Charity	161,600	77,000	238,600
Lanarkshire Health Board Endowment Funds	231,600	321,006	552,606
Lancashire & South Cumbria NHS Foundation Trust Charity	183,006	-	183,006
Lancashire Teaching Hospitals Charity	394,600	75,052	469,652
Leeds and York Partnership NHS Foundation Trust Charitable Fund	108,100	66,000	174,100
Leeds Community Healthcare Charitable Trust and Related Charities	161,600	76,727	238,327
Leeds Hospitals Charity (Leeds Cares)	670,100	1,274,224	1,944,324
Leicester Hospitals Charity Leicester	251,100	893,595	1,144,695
Lewisham and Greenwich NHS Trust Charitable Fund	186,100	154,000	340,100
Lincolnshire Community Health NHS Charity	168,600	31,187	199,787
Liverpool Heart and Chest Hospital Charity	195,100	-	195,100
Liverpool Women's Hospital Charity	151,100	44,000	195,100
London Ambulance Service Charity	179,100	895,551	1,074,651
London North West Healthcare Charitable Fund	196,600	-	196,600
Love Your Hospital (Western Sussex Hospitals Charity)	189,600	165,000	354,600
Luton and Dunstable Hospital Charitable Fund (merged to become Bedford Hospital NHS Trust Charitable Fund)	191,600	636,662	828,262
Maidstone and Tunbridge Wells NHS Charitable Fund	182,600	-	182,600
Manchester University NHS FT Charity	298,100	528,000	826,100
Maudsley Charity	172,100	-	172,100
MCH Charity (Mid Cheshire Hospitals Charity)	172,100	-	172,100
Medway Hospital Charity, The	168,600	181,696	350,296
Mersey Care Charity	89,600	50,000	139,600
Mid Essex Hospitals Charity (merged with Mid and South Essex)	280,600	918,103	1,198,703

Charity Name	Grants Awarded 2020 £	Grants Awarded 2021 £	Total Awarded £
Milton Keynes Hospital Charity	167,100	90,430	257,530
Moorfields Eye Charity	154,600	-	154,600
MY Hospitals Charity (Mid Yorkshire Hospitals NHS Trust Charitable Fund)	200,100	200,500	400,600
My WISH Charity (West Suffolk)	168,600	66,000	234,600
National Waiting Times Centre Board Endowment Fund (Scotland)	101,100	-	101,100
Newcastle Upon Tyne Hospitals NHS Charity	583,100	1,567,845	2,150,945
NHS Blood and Transplant Charitable Fund	179,100	61,000	240,100
NHS Grampian Endowment Fund	238,600	597,043	835,643
NHS Greater Glasgow and Clyde Endowments (Greater Glasgow Health Board Endowment Funds)	417,100	875,432	1,292,532
Norfolk and Norwich Hospitals Charity	394,600	490,086	884,686
Norfolk and Suffolk NHS Foundation Trust Charitable Fund	118,600	50,000	168,600
Norfolk Community Health & Care NHS Trust Charitable Fund	154,600	55,000	209,600
North Cumbria University Hospitals Charitable Fund	182,600	-	182,600
North East Ambulance Service Trust Fund	158,100	-	158,100
North East London Community Healthcare Charity (Health Way Foundation)	179,100	-	179,100
North Middlesex Hospital General Charitable Fund	238,600	-	238,600
North Tees and Hartlepool NHS Foundation General Charitable Fund	175,600	-	175,600
North West Ambulance Service Charitable Fund	132,600	687,083	819,683
North West Boroughs Healthcare NHS FT Charitable Funds	179,100	-	179,100
Northamptonshire Health Charity	203,600	552,060	755,660
NorthCare Charity (formerly Pennine Acute Hospitals Charity)	214,100	-	214,100
Northern Devon Healthcare NHS Trust Charitable Fund	161,600	-	161,600
Northern Health and Social Care Trust	147,600	300,340	447,940
Northern Ireland Ambulance Service Charity	47,600	50,000	97,600
Northumbria Healthcare NHS Trust Charity (Bright Northumbria)	196,600	197,280	393,880
Nottingham Hospitals Charity	249,100	840,071	1,089,171
Nottinghamshire Healthcare NHS Trust Charitable Funds	100,100	-	100,100
Orkney Health Board Endowment Funds	44,100	50,000	94,100
Our Charity (Cheltenham and Gloucester Hospitals Charity)	380,100	441,077	821,177
Oxford Health Charity	175,600	132,000	307,600
Oxford Hospitals Charity	224,600	150,188	374,788
Oxleas NHS Foundation Trust Charitable Fund	65,100	50,000	115,100
Pennine Care Charitable Foundation	165,100	-	165,100
Peterborough and Stamford Umbrella Charitable Fund (North West Anglia NHS Foundation Trust)	134,600	50,000	184,600
Plymouth Hospitals Charity	196,600	782,903	979,503
Poole Hospital NHS Foundation Trust Charitable Fund	267,600	-	267,600
Portsmouth Hospitals Charity	189,600	175,645	365,245
Powys Teaching Health Board Charity	104,600	50,000	154,600
Princess Alexandra Hospital Charity, The (Essex)	165,100	-	165,100
Queen Elizabeth Hospital King's Lynn Charitable Fund, The	161,600	77,000	238,600
Queen Victoria Hospital Charity	147,600	33,000	180,600
R Charity (Royal Liverpool and Broadgreen University Hospitals NHS Trust Charity)	228,100	297,000	525,100
Raise (West Hertfordshire Hospital Charity)	172,100	121,000	293,100
Raising Health (Leicestershire Partnership NHS Trust Charity)	175,600	121,000	296,600
Robert Jones and Agnes Hunt Orthopaedic Hospital Charity	101,100	50,000	151,100
Rotherham Hospital and Community Charity, The	168,600	-	168,600
Rotherham, Doncaster and South Humber NHS Foundation Trust Charitable Fund	161,600	-	161,600
Royal Berks Charity	175,600	132,000	307,600
Royal Brompton and Harefield Hospitals Charity	165,100	-	165,100
Royal Cornwall Hospitals Charity	129,100	192,787	321,887
Royal Devon and Exeter NHS Foundation Trust General Charity	200,100	-	200,100
Royal Free Charity	423,600	735,129	1,158,729
Royal Marsden Cancer Charity, The	264,100	-	264,100
Royal National Orthopaedic Hospital Charity, The (RNOH)	151,100	44,000	195,100
Royal Orthopaedic Hospital Charitable Fund, The	180,600	-	180,600
Royal Papworth Hospital Charity	151,100	44,000	195,100
Royal Surrey County Hospital Charity	118,600	640,822	759,422
Royal Wolverhampton NHS Trust Charity	203,600	-	203,600
Salford Royal NHS FT General Charitable Funds	210,600	-	210,600
Sandwell and West Birmingham Hospitals Charity	521,325	462,223	983,548
SASH Charity (Surrey and Sussex Healthcare Charity)	172,100	-	172,100

Charity Name	Grants Awarded 2020 £	Grants Awarded 2021 £	Total Awarded £
SaTH (Shrewsbury and Telford Hospital) Charity	182,600	388,043	570,643
Scottish Ambulance Service Charity	75,600	50,000	125,600
Sheffield Hospitals Charity	683,100	735,129	1,418,229
Sherwood Forest Hospitals Charity	75,600	50,000	125,600
Shetland Endowment Fund	94,100	-	94,100
Shropshire Community Health NHS Trust Charitable Fund	51,100	50,000	101,100
Solent NHS Charity	111,600	50,000	161,600
Somerset NHS Foundation Trust Charitable Funds	203,600	198,000	401,600
South Central Ambulance Charity	165,100	410,911	576,011
South East Coast Ambulance Service Charity	115,100	50,000	165,100
South Eastern Health and Social Care Trust Charitable Fund	160,600	170,016	330,616
South Staffordshire Community & Mental Health Charitable Funds	96,600	50,000	146,600
South Tees Hospitals Charity	409,100	-	409,100
South Tyneside and Sunderland NHS Foundation Trust Charitable Funds	200,100	-	200,100
South West London & St George's Mental Health NHS Trust Charitable Fund	104,600	50,000	154,600
South Western Ambulance Service Charity	168,600	662,111	830,711
Southampton Hospital Charity	221,100	1,204,256	1,425,356
Southern Health and Social Care Trust Charitable Fund	164,100	-	164,100
Southmead Hospital Charity (North Bristol NHS Trust Charitable Funds)	200,100	136,965	337,065
Southport and Ormskirk Hospitals Charity	161,600	77,000	238,600
St George's Hospital Charity	200,100	1,031,147	1,231,247
Stars Appeal (Salisbury District Hospital Charitable Fund)	165,100	-	165,100
Stockport NHS Charity	125,600	121,000	246,600
Surrey & Borders Partnership NHS FT General Purposes Charity	108,100	50,000	158,100
Sussex Community NHS Charity	172,100	-	172,100
Swansea Bay Health Charity	233,600	466,212	699,812
SWFT Charity (South Warwickshire NHS Foundation Trust Charity)	174,100	110,000	284,100
Tameside & Glossop Integrated Care NHS FT Charitable Fund	68,600	50,000	118,600
Tavistock Clinic Foundation	94,100	50,000	144,100
Tayside NHS Board Endowment Funds	131,600	292,028	423,628
Tees, Esk and Wear Valleys NHS Trust General Charitable Fund	136,100	50,000	186,100
Three Wishes Charity (Wrightington, Wigan & Leigh)	132,600	50,000	182,600
Torbay and South Devon NHS Charitable Fund Devon	186,100	-	186,100
UHCW Charity (University Hospitals Coventry and Warwickshire)	756,990	212,825	969,815
United Lincolnshire Hospitals NHS Trust Charitable Fund	193,100	176,000	369,100
University College London Hospitals Charity	345,444	-	345,444
University Hospitals Birmingham Charity	286,100	1,110,112	1,396,212
University Hospitals of North Midlands Charity (UHNM)	458,100	44,000	502,100
Valley Hospital Charity (Dartford and Gravesham)	161,600	77,000	238,600
Velindre University NHS Trust Charity	97,600	-	97,600
Wallace and Gromit's Grand Appeal	35,000	-	35,000
Walton Centre Charity, The	147,600	33,000	180,600
Warrington and Halton Hospitals Charity	170,600	-	170,600
Well Wishers Charity (Walsall Healthcare)	168,600	-	168,600
Welsh Ambulance Service Charity	115,100	-	115,100
West London NHS Charitable Fund	165,100	-	165,100
West Midlands Ambulance Service Charity	182,600	709,486	892,086
Western Health and Social Care Trust Charitable Fund	114,100	63,117	177,217
Western Isles Health Board Endowment Funds	44,100	50,000	94,100
Weston Health NHS Trust Charitable Funds (merged with Bristol & Weston Hospitals Charity)	101,100	-	101,100
Whiston and St Helens Hospitals' Charity	132,600	2,500	135,100
Whittington Hospital Charitable Funds, The	267,600	-	267,600
WISHH (The Hull and East Yorkshire Hospitals Health Charity)	200,100	-	200,100
Worcestershire Acute Hospitals Charity Herefordshire and Worcestershire	182,600	83,500	266,100
Worcestershire Health and Care NHS Trust Charitable Funds and Other Related Charities	65,100	50,000	115,100
WUTH Charity (Wirral University Teaching Hospital Charity)	182,600	143,000	325,600
Wye Valley NHS Umbrella Charity	161,600	428,659	590,259
Yeovil Hospital Charity	154,600	-	154,600
York & Scarborough Hospitals Charity (York Teaching Hospitals)	200,100	-	200,100
Yorkshire Ambulance Service NHS Trust Charities	175,600	555,404	731,004



# WHAT WE'VE ACHIEVED TOGETHER

During 2021, our supporters helped us be there for every NHS moment, providing the extra support needed to care for staff, patients and communities. Here are some of the life-changing things we achieved together in 2021, working with more than 230 NHS charities across the UK. We are currently carrying out an evaluation of the Covid appeal so that we can share more detail on its impact in future.

## CARING FOR NHS STAFF

NHS staff are dealing with relentless pressure on services. Our recent YouGov research shows that over 55% of staff surveyed have experienced a mental health toll from the pandemic, with many reporting depression, anxiety or even post-traumatic stress.

At the same time, as normal services resume there are huge backlogs and clinics are busier than ever.

In 2021, generous support for our 'Be There for Them' campaign helped NHS staff face the triple challenge of dealing with the continuing impact of Covid-19, tackling the backlog of patients who desperately need treatment for other conditions, and making sure their own mental health isn't a casualty of the crisis.

### COUNSELLING AND PEER TO PEER SUPPORT FOR THE WORKFORCE

Over the last two years, donations enabled us to fund more than 400 projects for staff, including counselling services, peer-to-peer support, and helplines to help look after their mental health.

### REST AREAS AND PRACTICAL SUPPORT

We also provided practical support, like access to improved indoor rest areas and green spaces, to enable staff to have a break during long and busy shifts, supporting them to continue their vital life-saving work.

### SUPPORT FOR STAFF DISPROPORTIONATELY AFFECTED BY COVID

In addition, we distributed grants to support staff, volunteers and patients who are being disproportionately affected by the Covid-19 crisis, such as patients and staff from ethnic minorities and high-risk groups like those living with disabilities.



**“We have run a number of reflective spaces for staff to talk about how they feel and one key theme that has come through is guilt. These feelings of guilt are linked to ‘moral distress’, which can have a significant impact on overall mental health.”**

**Teresa Jennings**, Consultant Clinical Psychologist in Occupational Health at Northumbria Healthcare NHS Foundation Trust. Funded by NHS charity Bright Charity, using NHS Charities Together grants.



**“I feel really privileged to be working with this group and helping them through a co-production process to get this important project off the ground. We are really appreciative of the funding we’ve received as we can now ensure that the voices from our ethnic minority service users can be heard and, importantly, we can pay for their time.”**

**Anna-Marie Jones**, Research & Development Improvement Manager, Sussex Partnership NHS Foundation Trust. Funded by Sussex mental health charity, Heads On, using NHS Charities Together grants.



**“Dealing with the emotional burden has been incredibly challenging, and the impact on staff is going to last well into the future. Luckily our hospital has been fantastic, and thanks to a grant from NHS Charities Together was able to go above and beyond with support. But we need the support offered in previous waves to continue – both to help us cope with these new pressures and maintain our mental health long-term.”**

**Dr Shaun Thein**, Clinical Research Fellow and Specialist Respiratory Registrar, Sandwell and West Birmingham NHS Trust

**Over  
55%**

of NHS staff say they have experienced a mental health toll from the pandemic



## IMPROVING SERVICES FOR PATIENTS

Thanks to support in 2021, we were able to help extremely sick patients who were anxious and isolated, as tens of thousands more people tragically lost their lives to Covid-19.

### FUNDING RESEARCH AND INNOVATION

Generous donations were invested in specialist equipment and ways to improve treatments for Covid-19. For example, we were able to fund the development of a new tool that enables patients to access key health information digitally, research into the impact of Long Covid, and sharing best practice in Covid-19 treatment to improve outcomes for patients.

**“Funding from NHS Charities Together has enabled us to fund My Journey, a new tool that makes patient information available digitally. We’ve covered topics like autism, mental health and diabetes management through podcasts, videos and webinar recordings – enabling patients to access key information at a time and in a way that suits them.”**

**Other benefits include a reduction in waiting lists, plus freeing up staff time to further improve services. Feedback shows that users of these services have benefitted greatly.”**

Spokesperson for Northern Health and Social Care Trust. Funded by NHS Charities Together grants.

**“We are incredibly grateful to NHS Charities Together for funding this important rehabilitation programme at QEH, which is tailored to patients and staff living with Long Covid or who have chronic stable heart failure that has worsened due to pandemic-induced self-isolation and shielding. The benefit of heart failure rehabilitation is well-documented and this programme will make a positive difference to the lives of hundreds of patients and staff at QEH.”**

Dr Rudolf Duehmke, Consultant Cardiologist and lead of the Long Covid research project, The Queen Elizabeth Hospital King’s Lynn NHS Foundation Trust (QEH). Funded by The Queen Elizabeth Hospital King’s Lynn Charitable Fund, using NHS Charities Together grants.



**“Thanks to funding from NHS Charities Together and Blue Skies, we were able to act quickly in making these enhancements to the care received by patients and their loved ones. We’ve been overwhelmed by the support that we have received from the charities and the local community, which enables us to make these facilities available for patients and families both now and in the future.”**

Jackie Brunton, Lead Nurse for End of Life and Bereavement Care, Blackpool Teaching Hospitals NHS Foundation Trust. Funded by Blue Skies Hospitals Fund NHS charity, using NHS Charities Together grants.

### CONNECTING FAMILIES AND PROVIDING BEREAVEMENT SUPPORT

We kept patients connected with family members, sometimes giving them one last chance to say goodbye, by funding digital equipment like tablets to enable virtual visiting. We also provided bereavement support for families who have lost loved ones to help them through the most difficult of times.

**£2.1  
million**

**in Covid emergency grants  
awarded in 2021**

## TACKLING THE WIDER DETERMINANTS OF ILL HEALTH

Your support has made it possible for us to invest in more than 325 community partnership projects to give extra support to the NHS.

Covid-19 has not only had a huge impact on the mental health of NHS staff and patients but that of the entire country. And many long-term conditions have been worsened by the pandemic too.

We aim to help take pressure off the health service by tackling the wider determinants of ill health. Through our partners, your donations have helped fund community volunteers and projects, addressing the isolation and rising mental health problems experienced by people of all ages.

### FUNDING VOLUNTEERS TO HELP SAVE LIVES

We were delighted to make seven million pounds available to the ambulance service to provide training for existing Community First Responders and other volunteers and to recruit 60,000 more, who will work with ambulance crews across the UK to help ease the unprecedented pressure on the service.

Alongside training, we improved community access to defibrillators, provided dedicated first responder groups cars, and supplied vital equipment. This extra support will help reduce hospital admissions by giving a fast response from a member of the public with lifesaving skills and equipment, and could be the difference between life and death for patients.



**£7m** for recruitment and training of Community First Responders and volunteers

**“Thanks to support from the public and NHS Charities Together, we are able to go the extra mile for our exceptional staff, volunteer heroes and communities, delivering tangible benefit across the South West of England. The projects funded allow us to focus on early intervention and prevention meaning we will save many more lives as a result.”**

**Zoe Larter**, Head of Charity, South Western Ambulance Charity. Funded by South Western Ambulance Charity, using NHS Charities Together grants.

## TACKLING ISOLATION AND IMPROVING MENTAL HEALTH

The health impacts of isolation and loneliness rose rapidly, which is why your donations were used to create patient hubs and other community projects tackling isolation and the wider mental health impacts of the pandemic.

**“Funding from NHS Charities Together will make such a difference to help reduce feelings of isolation in our local community. Expanding the South Notts Befriending Service will have a hugely positive impact on some of the most vulnerable people in our local community at a time when they need it most. We will continue to support communities, during the pandemic and beyond.”**

**Barbara Cathcart**, Chief Executive, Nottingham Hospitals Charity. Funded by the Nottingham Hospitals Charity, using NHS Charities Together grants.



**£22  
million**

awarded to support  
community partnerships

**“South London Listens enabled us to hear from almost 6,000 people who have been most affected by the pandemic and find tangible solutions to build stronger, mentally healthier communities for the future together. This innovative programme will see us work hand in hand with our communities to support people’s mental health to prevent people across South London from becoming unwell.”**

**Ranjeet Kaile**, Director of Communications, Stakeholder Engagement and Public Affairs, South London and Maudsley NHS Foundation Trust. Funded by Maudsley Charity, using NHS Charities Together grants.



# LOOKING FORWARD

With your support we can continue to be there for exhausted NHS staff to help them through the hardest moments. We can continue to push patient care further to transform lives and to support community volunteers making all the difference in emergency situations.

## THE NHS CAN'T FACE EVERY CHALLENGE ALONE

Sadly the pressures on our NHS and its staff are relentless. The pandemic has exacerbated every challenge for our health service and reminded us just how much we rely on it.

More staff than ever are facing burnout. And our communities have more elderly people and long-term conditions to care for, with increasing numbers across all ages waiting for treatment.

NHS resources have their limits which is why the extra support provided by NHS Charities Together will continue to be so important now and in the long term.

### HELPING PATIENTS AND COMMUNITIES WHEN THEY NEED IT MOST

During 2021 we continued to fundraise, raising a total of £11 million during the financial year. These generous donations will fund projects that meet our ongoing strategic objectives around supporting the workforce and patients and creating an impactful NHS charity sector, to help the NHS recover from the most difficult time in its history.

- The challenges that faced the NHS before the pandemic are still there, and we need to help the NHS care for a nation growing older than ever and living with an increasing number of long-term conditions.
- We need to continue to be there for the NHS as it deals with future pandemic peaks.
- And we need to help address the wider health impacts from the pandemic, helping to tackle a rise in mental health problems in the community and the huge backlog in people needing treatment, an inevitable legacy from a health service that has needed to focus on beating Covid-19 over the last two years.

### BEING THERE FOR THE NHS WORKFORCE

While staff are understandably proud of what NHS people across the country have achieved in incredibly challenging times, our latest research shows eight in 10 NHS staff surveyed (81%) believe increasing pressures on NHS services are as concerning as the peak of the Covid-19 pandemic, with 96% agreeing they will continue for years.

Their concerns include clinics being overwhelmed due to a backlog of patients and large waiting lists, the increase in patient ill health due to some conditions not being treated during the pandemic, increasing numbers of older people and the growing impact of winter pressures such as respiratory illnesses.

Over half report a mental health impact from caring for sick patients, with many reporting exhaustion and burnout.

While the impact on the mental health of NHS staff since the pandemic looks set to continue, two thirds of staff (66%) have thankfully now been able to access support from their place of work, in part due to your generous donations.



Together we can help the NHS go further, providing the extra support that makes all the difference.

### MAKING A DIFFERENCE TOGETHER

- The network of NHS charities can care for the NHS staff who care for us with practical and emotional support, through counselling, helplines and a place to rest during a busy shift.
- We can also help care for patients through innovative ideas and projects that prevent ill health, enable them to wait well, have the best possible hospital experience and get home as quickly as possible after treatment.

Together we can help the NHS go further, providing the extra support that makes all the difference.



# 96%

of staff believe pressures on the NHS will continue for years

## OUR FUTURE STRATEGY

During 2022 we will be taking forward each of our five strategic objectives.

### EMPOWERING THE NHS CHARITY SECTOR

We will be delivering our member training and support strategy and continuing to consult closely with member NHS charities to expand our member offer and reach our collective fundraising goals that help the NHS go further. This will include our inaugural member conference in 2022 as well as launching a development grant to support member charities, additional mentoring support and creating our member charter.

### SUPPORTING STAFF AND VOLUNTEERS

A large focus of our work will be as a champion of support for staff and volunteers within the NHS, through both grant funding and leading advocacy campaigns. We will be evaluating the grants we have already funded and gathering data to understand where can have most impact in future. We will also be continuing to invest in training and equipment for volunteers, rest spaces and mental health support for the workforce, as well as raising awareness of the ongoing sacrifices of the health and care workforce through campaigns and events.

### PREVENTING ILL HEALTH AND LONG-TERM CONDITIONS

We will be continuing to award community grants helping to tackle ill health and long-term conditions for patients, families and communities. Our priority this year is to evaluate the UK wide stage 2 community partnership grants to understand where we are achieving greatest impact for patients, families and communities. This will help inform our ongoing strategy and how best we can maximise our impact in tackling health inequalities in future, working with the member NHS charities and wider charity networks in each area.

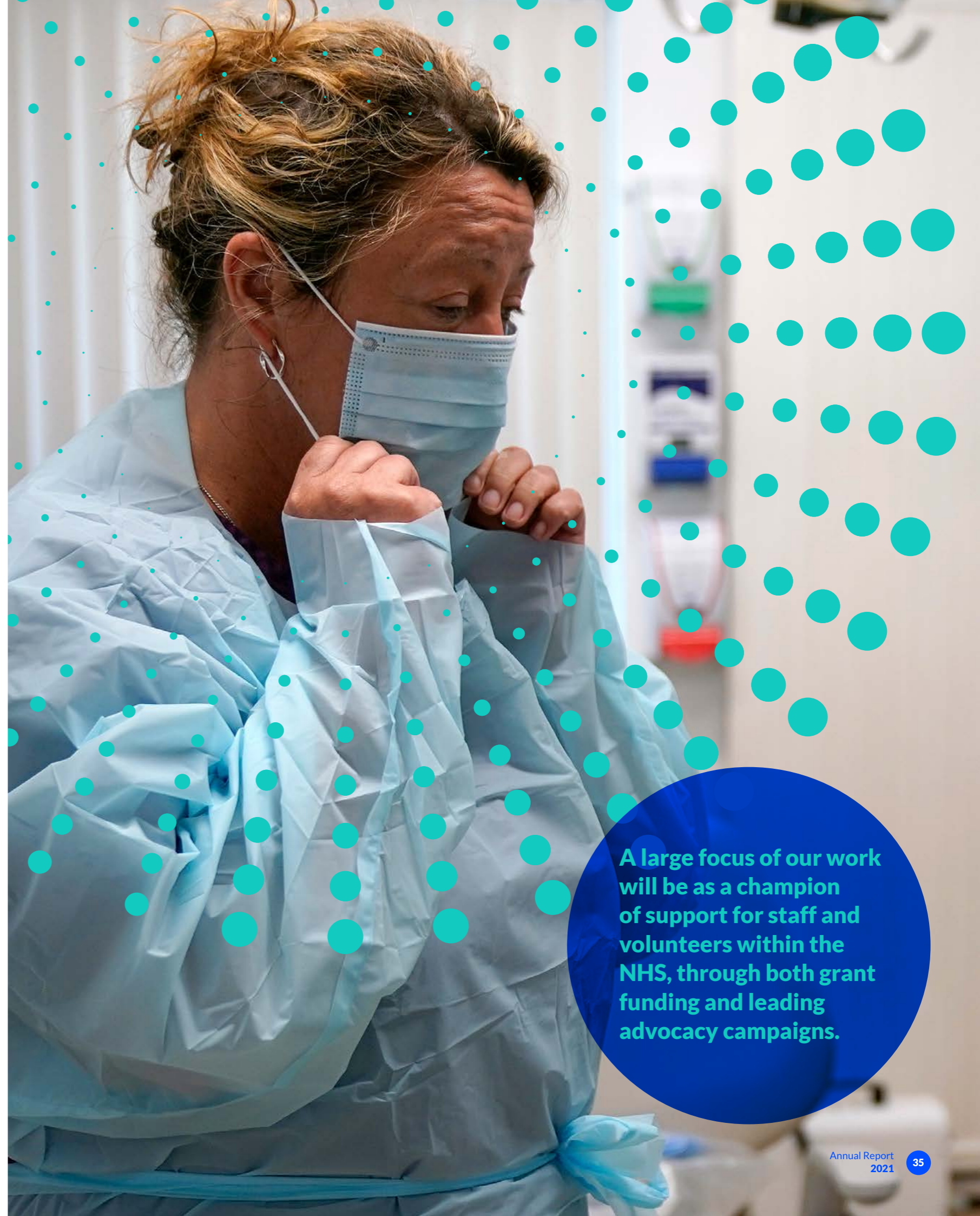
### RAISING AWARENESS AND FUNDRAISING

We will continue to raise awareness of what NHS charities do and the important needs we are meeting to help the NHS go further, building engagement with our collective brand and fundraising through campaigns, mass participation events and partnerships with corporates and supporters.

### BUILDING OUR ORGANISATION

Having undergone an incredible transformation over the last two years, we will be continuing to develop as an organisation, ensuring we continue to strengthen our governance, systems and processes so that we can have the most impact for the NHS and be a great place to work for our team.

[See page 13 for the full list of our strategic objectives.](#)



A large focus of our work will be as a champion of support for staff and volunteers within the NHS, through both grant funding and leading advocacy campaigns.

## ALL BECAUSE OF YOU

The support of incredible donors, supporters and partners is the reason we've been able to help the NHS go further this year. Generous donations have made all the difference to the health and wellbeing of people working day and night for the NHS and everyone they have cared for. **Thank you.**

We are so grateful for the donations from everyone who has raised vital funds this year – from walking and running, to cycling and skipping, gaming and head-shaving – there's been no limit to the determination and creativity!

Huge thanks to everyone who donated to our **'Be There for Them'** appeal to support the mental health and wellbeing of the NHS workforce across the UK. You helped provide counselling, helplines and wellbeing rooms where staff could take a desperately needed break.



More than 5,000 people signed up to host a tea party – either virtually or in person – to celebrate the NHS's 73rd birthday and support our health service. We would like to thank our partners who helped make the **NHS Big Tea** the biggest ever: in particular, **Morrisons**, our headline sponsor, and their community champions who fundraised in store; **Alpro**, who match-funded all text donations; **Arla**, who donated 5p from every bottle sold in Morrisons; and **Flowercard** who gifted £5 from every teacup arrangement sold. And a special mention

to our Joint Royal Patron **HRH The Duke of Cambridge**, who hosted an exclusive royal NHS Big Tea for NHS staff at Buckingham Palace.

Our appreciation to those of you who were inspired to donate by our two outdoor art installations – **Standing with Giants** by artist **Dan Barton**, consisting of 300 hand-painted, life-size frontline workers as a tribute to the NHS staff who lost their lives in the fight against Covid-19; and **Gratitude**, a public art installation delivered by **Wild in Art**, featuring 51 human sculptures to pay tribute to the courage and dedication of NHS staff and key workers during the pandemic. We are so grateful to the artists who lent us their talents, the businesses who sponsored a sculpture, and the people who bid in the auction to give a sculpture a home.

Massive thanks to all of you who took part in the **3,000 Skips** challenge in October, raising an incredible £92,000. We even saw group challenges like **Simply Gym Cardiff Bay**, who asked gym-goers to collectively skip 100,000 jumps for the NHS!

**£92,000**

Raised from the 3,000 skips challenge in October



**5,000**

people signed up to host a tea party to celebrate the NHS's 73rd birthday

We are so grateful to the contribution of our supporters who made a regular donation month after month. Knowing we have funding we can rely on to care for the NHS at this crucial time makes a huge difference.

Sincere thanks to former doctor **Adam Kay** for kindly donating the profits from his book *Dear NHS: 100 Stories* to say thank you and to all those who contributed and told their personal stories.

And our heartfelt gratitude to everyone at our corporate partners, including: **De Vere Hotels** for their continuing support and for donating 10% from every booking made directly with one of their hotels; **TMB Art Metal**, for creating such beautiful Thank You Pins designed around the hands of six members of NHS staff; **Amazon UK Services Ltd** for their tremendous ongoing support of NHS Charities Together and member charities across the country; **Arriva UK Bus**, for raising over £260,000 from their exact fare scheme and **Stagecoach** for donating over £150,000 by saving excess change during lockdown.

We were overwhelmed by the generous support we received from our retail partners and their customers who raised funds in so many ways, including: **thortful** who donated money from selling their cards and Mother's Day rainbow bouquet and through their 'Thank You' promotion; **M&S** for adding NHS Charities Together to their Sparks programme; **Holland and Barrett** who gave their customers the option to make a top-up 50p donation online or in store; **Tesco**, for selling a range of products that included a T-shirt and mugs, raising over



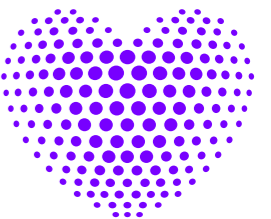
Writer and comedian Adam Kay kindly donated proceeds from his book 'Dear NHS: 100 Stories' Photo credit: Charlie Clift

£200,000; **Kurt Geiger** who featured NHS Heroes in their People Empowered campaign, with 100% of profits donated from their blue heart shoes and bag; **GlaxoSmithKline** for their support through their Winter Health campaign; and **David Austin Roses** for raising £30,000 from their rose release for 2021 – 'Nye Bevan', named after the founder of the NHS.

We would like to send our appreciation to all the businesses who kindly supported us during the festive season, in particular our friends at **Starbucks** who raised funds from the sale of their colour-changing cups and provided free coffee to NHS workers. And not forgetting **John Lewis and Partners** for their continued support and for adding some festive cheer by selling their Christmas products in aid of NHS Charities Together.

And, finally, a special shout out to the **member charities** we partnered with this year, based in hospitals, ambulance trusts, mental health trusts, community health trusts and health boards across the UK. Your compassion and hard work in 2021 changed the lives of NHS staff and volunteers on the frontline and the patients they cared for when they most needed support. We are so proud to work with you and contribute to your incredible achievements. We couldn't do it without you.

**THANK YOU!**





# FINANCIAL STATEMENTS

## STRUCTURE, GOVERNANCE AND MANAGEMENT

### GOVERNING DOCUMENT

The Charity is a company limited by guarantee, incorporated in England and Wales on 20 November 2019 (registered number 12325259), and registered as a charity with the Charity Commission for England & Wales on 25 November 2019 (registered charity number 1186569). From 25 January 2021 the Charity has also been registered with the Scottish Charity Regulator (Scottish Charity number SC050716).

The Charity is governed by its Articles of Association which define the objects and powers of the Company.

The Charity has a wholly owned subsidiary, ANC Trading Limited (registered in England and Wales number 12608754), which generates commercial income from the Charity's brand. The financial results of ANC Trading Ltd have been consolidated with those of the Charity and are shown separately in note 15.

### FUNDRAISING

During the Covid-19 appeal we were fortunate to receive fundraising support from all quarters – individuals, companies, professional fundraisers. Where appropriate we entered into formal legal agreements to regulate fundraising on our behalf by others and to ensure they complied with the Fundraising Regulator's Code of Practice. In particular we required our supporters to protect vulnerable people and other members of the public from any unreasonable intrusion into their privacy or any undue pressure to donate.

We are registered with the Fundraising Regulator and have committed to follow the Code of Fundraising Practice and the Fundraising Promise. During the year we received no complaints about our fundraising.

### OBJECTS

**The Objects of the Charity are, for the public benefit:**

- a. the advancement of health, and, in particular but without limitation, the promotion of the effective working of NHS Charities;
- b. the advancement and promotion of knowledge and education in relation to NHS Charities and their purposes, including by engaging in and supporting research (and the dissemination of the useful results); and
- c. the furtherance by any other means of the charitable purposes of all or any NHS Charities generally.

### ACTIVITIES FOR THE PUBLIC BENEFIT

#### Grant making

The Charity raises funds which it grants to Member Charities to support NHS patients, NHS staff, and the health of the communities in which Members work. Examples of support given during 2021 appear elsewhere in this Annual Report.

Trustees are supported in their grant awarding by NHS Charity Member Peer Reviewers and also the Grants Advisory & Review Panel (GAARP).

This independent group provides:

- subject matter expertise in the governance and administration of best practice grant schemes
- expert and external grant decision-making recommendations
- specific expertise around evidence-based needs, trends and structures to support the delivery of the vision and mission of NHS Charities Together and meet the needs of our Members and their associated NHS Trusts through appropriate grant making
- independent thinking, challenge and assurance in the grant making of NHS Charities Together

Trustees wish to record their thanks to the GAARP members for their considerable contribution to the Community Partnership Grants programme.

### Member services and support

The Charity provides a range of services aimed at helping Member Charities operate most effectively and to the highest standards.

**Membership gives access to:**

- conferences and events
- lobbying/representation
- networking and support
- news and information
- nationwide campaigns

During 2021 face-to-face member events were still not possible. However, online and digital support continued, including regular news bulletins, webinar events, and our a new digital community for Members.

### Public benefit

The Trustees confirm that they have complied with their duty under the Charities Act 2011 to have due regard to the public benefit guidance published by the Charity Commission in determining the activities undertaken by the Charity.

Between them, our Member Charities hold more than £3 billion in assets and generate an annual income of more than £500 million. These charities play a significant role in supporting the NHS, and the additional funds they produce greatly enhance the services and facilities provided by their associated NHS organisations for the benefit of the public.

By sharing information, ideas and best practice the Charity helps its Member Charities with the management of their charitable assets, the maximising of fundraising opportunities, and effective grant making.

The Charity's grants programmes lead to an enhancement in healthcare for NHS patients from all walks of life, regardless of their background or personal circumstances.

### TRUSTEES

The Trustees, who are also directors under company law, who have served during the year are set out on page 61. Up to 12 Trustees are elected by Members and a further three Trustees can be coopted by the other Trustees. A majority of Trustees is required to be senior officers, senior employees or trustees of a Member, or members

of the board or senior officers or senior employees of the corporate trustee of a Member. They must each come from a separate Member (but they are not representatives of that Member).

A Nominations Committee of the Trustees reviews the composition (including the skills, knowledge and experience) of the Board, and considers succession planning. Following an open recruitment process, Trustees are recommended to Members for election.

When recruiting new Trustees, the Charity aims to attract a diverse range of candidates who have the skills it needs. We value the benefits of having members with different backgrounds, expertise and experience. Ultimately, though, Trustee appointments are based on merit in the context of ensuring that we have an appropriate balance of skills and experience. A Trustee's term of office is three years, with a normal maximum for any Trustee of three terms.

All new Trustees undertake an induction programme, which includes an overview of the Charity's strategy, aims and objectives. The role and duties of the Trustees, company and charity law and governance, and financial and risk management are also covered. Trustees meet with the Chief Executive, members of the Senior Leadership Team and other relevant parties. Additional training is arranged as required for individual Trustees or for the Board as a whole.

Trustees are volunteers and receive no remuneration or benefits from the Charity. Out-of-pocket expenses may be claimed, and Trustee Indemnity Insurance is purchased. Details are set out in note 14 to the accounts.

### MANAGEMENT

The Board of Trustees is ultimately responsible for the overall control and strategic direction of the Charity and for the protection of its assets. Day-to-day management is delegated to the Chief Executive, Ellie Orton, and the Executive Directors who comprise the Senior Leadership Team.

Members of the Senior Leadership Team at the date of this Report or who served during the year are shown on page 61. Remuneration of the Chief Executive and the Senior Leadership Team is set by the Trustees' Remuneration Committee and is informed by market rates.

## RISK

Identifying and managing the possible and probable risks that the Charity may face is a key part of effective governance and the Trustees acknowledge their responsibility for the identification, assessment and management of risk. Specifically, the Trustee Board determines the risk appetite and sets the culture of risk management within the Charity and monitors the management of important risks facing the Charity.

The Charity has an Audit & Risk Committee with delegated authority from the Trustees to maintain the risk register and report to them on internal controls and alert them to any emerging issues. It ensures that risks are appropriately owned and that risk owners are actively managing their risks with the appropriate controls in place and working effectively.

The Chief Executive and Senior Leadership Team are responsible for the identification and assessment of major risks. They ensure that controls are implemented and provide regular reports to the Board and Committees on the status of risks and their controls. They are responsible for encouraging good risk management practices and a positive attitude towards the control of risk among all staff.

Staff of the Charity are responsible for controlling risk when carrying out their duties, for following policies and procedures set by the Trustee Board designed to mitigate risk, and for identifying new and emerging risks to the Charity.

Risks that have been identified are recorded on a Risk Register along with an assessment of their severity and a record of controls and mitigating actions.

The most significant risks facing the Charity result from the rapid growth in income, members and staff. There is also the risk that the Charity may not achieve a diverse and sustainable income sufficient to address its needs.

In response to these risks, the Charity has continued to invest in staff and systems during 2021 and into 2022 and it continues to explore new funding opportunities and partnerships.

Work is taking place during 2022 to evaluate the grants awarded in 2020 and 2021 and to provide the evidence of future need and how best to address it.

## RESERVES

Funds totalling £66.4 million (2020: £105.9 million) are either designated or restricted for the Covid-19 appeal. Within that figure Trustees have allocated £36.2 million to existing grant programmes.

A designated fund representing 10% (£15.4 million) of the net Covid appeal proceeds is held to support delivery of the grants programme and to invest in the Charity and its Membership over a three to four year period.

As at 31 December 2021, the Charity had unrestricted reserves of £4.6 million (2020: £908,000). This is sufficient to cover the budgeted annual expenditure of the charity and is in line with the Trustees' Reserves Policy to have sufficient free reserves to cover at least 12 months' running costs.

## TRUSTEE DUTIES

Section 172 of the Companies Act 2006 requires the Trustees to act in the way they consider, in good faith, would be most likely to promote the success of the Charity to achieve its charitable purposes. The Act states that in doing so, the directors should have regard, amongst other matters, to:

### The likely consequence of any decision in the long term

Our current strategy was developed to enhance the role of charitable giving in the NHS over the long term. All decisions have been taken with this in mind and we have been reviewing our future strategy in the light of the phenomenal success of our Covid-19 appeal.

### The interests of the Charity's employees

Our employees are vital to the Charity's success. We are a small but growing team, and we have been working hard to ensure staff are supported in their roles, as we aim towards our goal of being the best place to work.

### The need to foster the Charity's business relationships with suppliers, customers and others

We have a small number of suppliers and work to ensure good relationships with them, while also reviewing arrangements to ensure that the combination of cost and service delivers best value. We work with our Members to ensure the services we provide meet their needs and are of a high quality. We collect formal and informal feedback after all our events so that we can learn and improve how we do things.

### The impact of the Charity's operations on the community and the environment

Our charitable work aims to benefit the community and we plan our grant making with community benefit in mind.

### The desirability of the Charity maintaining a reputation for high standards of business conduct

Our reputation and public trust in NHS Charities Together is fundamental to our future success. Our organisational values and behaviours are at the heart of our planning and decision making.

### The need to act fairly between members of the Charity

We aim to be a fully inclusive organisation that is relevant and accessible for all NHS Charities. Our services and grant making are designed to ensure all Members are able to benefit, regardless of their size or structure.

## STATEMENT OF TRUSTEE RESPONSIBILITIES

Trustees are responsible for preparing the Trustees' Annual Report and Financial Statements in accordance with applicable law and United Kingdom Accounting Standards (United Kingdom Generally Accepted Accounting Practice). Company law requires the Trustees to prepare accounts for each financial year that give a true and fair view of the state of affairs of the Charitable Company and the Group, and of the incoming resources and application of resources, including the income and expenditure of the Charitable Group for that period.

### In preparing these financial statements, the Trustees are required to:

- select suitable accounting policies and then apply them consistently
- observe the methods and principles in the Charities Statement of Recommended Practice.
- make judgements and estimates that are reasonable and prudent.
- state whether applicable UK Accounting Standards have been followed, subject to any material departures being disclosed and explained in the financial statements.
- prepare the financial statements on the going concern basis unless it is inappropriate to presume the Charitable Company will continue in business.

The Trustees are responsible for keeping proper accounting records that can disclose with reasonable accuracy the financial position of the Charitable Company at any time and provide financial statements which comply with the Companies Act 2006, Charities and Trustee Investment (Scotland) Act 2005 and the Charities Accounts (Scotland) Regulations 2006 (as amended).

They are also responsible for safeguarding the assets of the Charitable Company and the Group, and taking reasonable steps for the prevention and detection of fraud and other irregularities.

### So far as the Trustees are aware:

- there is no relevant audit information of which the Charitable Company's auditors are unaware.
- the Trustees have taken all the steps that they ought to have taken to make themselves aware of any relevant audit information, and to establish that the auditors are aware of that information.

The Trustees are responsible for the maintenance and integrity of the corporate and financial information included on the Charitable Company's website. Legislation in the United Kingdom governing the preparation and dissemination of financial statements may differ from legislation in other jurisdictions.

The Trustees confirm that they have complied with their duty under the Charities Act 2011 to have due regard to the public benefit guidance published by the Charity Commission in determining the activities undertaken by the Charity.

The Trustees approve and present this Annual Report (including the Strategic Report) and the Consolidated Financial Statements.



IAN LUSH

Chair

24/08/2022

# CONSOLIDATED FINANCIAL STATEMENTS

## INDEPENDENT AUDITOR'S REPORT

### Independent auditor's report to the members of The Association of NHS Charities

#### Opinion

We have audited the financial statements of The Association of NHS Charities (the 'parent charity') and its subsidiary (the 'group') for the period ended 31st December 2021 which comprise the Group Statement of Financial Activities, the Group and Parent Charity Balance Sheets, the Group Statement of Cash Flows and notes to the financial statements, including a summary of significant accounting policies. The financial reporting framework that has been applied in their preparation is applicable law and United Kingdom Accounting Standards, including FRS 102 "The Financial Reporting Standard applicable in the UK and Republic of Ireland" (United Kingdom Generally Accepted Accounting Practice).

#### In our opinion the financial statements:

- give a true and fair view of the state of the group's and of the parent charity's affairs as at 31st December 2021 and of the group's income and expenditure for the period then ended;
- have been properly prepared in accordance with United Kingdom Generally Accepted Accounting Practice; and
- have been prepared in accordance with the requirements of the Companies Act 2006 and the Charities and Trustee Investment (Scotland) Act 2005, regulations 6 and 8 of the Charities Accounts (Scotland) Regulations 2006 (as amended).

#### Basis for opinion

We conducted our audit in accordance with International Standards on Auditing (UK) (ISAs (UK)) and applicable law. Our responsibilities under those standards are further described in the Auditor's responsibilities for the audit of the financial statements section of our report.

We are independent of the group and the parent charity in accordance with the ethical requirements that are relevant to our audit of the financial statements in the UK, including the FRC's Ethical Standard, and we have fulfilled our other ethical responsibilities in accordance with these requirements. We believe that the audit evidence we have obtained is sufficient and appropriate to provide a basis for our opinion.

#### Conclusions relating to going concern

In auditing the financial statements, we have concluded that the trustees' use of the going concern basis of accounting in the preparation of the financial statements is appropriate.

Based on the work we have performed, we have not identified any material uncertainties relating to events or conditions that, individually or collectively, may cast significant doubt on the group's and the parent charity's ability to continue as a going concern for a period of at least twelve months from when the financial statements are authorised for issue.

Our responsibilities and the responsibilities of the trustees with respect to going concern are described in the relevant sections of this report.

#### Other information

The other information comprises the information included in the Annual Report, other than the financial statements and our auditor's report thereon. The trustees are responsible for the other information contained within the annual report. Our opinion on the financial statements does not cover the other information and, except to the extent otherwise explicitly stated in our report, we do not express any form of assurance conclusion thereon.

In connection with our audit of the financial statements, our responsibility is to read the other information and, in doing so, consider whether the other information is materially inconsistent with the financial statements

or our knowledge obtained in the course of the audit, or otherwise appears to be materially misstated. If we identify such material inconsistencies or apparent material misstatements, we are required to determine whether there is a material misstatement in the financial statements or a material misstatement of the other information. If, based on the work we have performed, we conclude that there is a material misstatement of this other information, we are required to report that fact.

We have nothing to report in this regard.

#### Opinions on other matters prescribed by the Companies Act 2006 and the Charities and Trustee Investment (Scotland) Act 2005, regulations 6 and 8 of the Charities Accounts (Scotland) Regulations 2006 (as amended).

#### In our opinion, based on the work undertaken in the course of the audit:

- the information given in the Strategic Report and the Trustees' Report for the financial period for which the financial statements are prepared is consistent with the financial statements; and
- the Strategic Report and the Trustees' Report have been prepared in accordance with applicable legal requirements.

#### Matters on which we are required to report by exception

In light of the knowledge and understanding of the group and the parent charity and their environment obtained in the course of the audit, we have not identified material misstatements in the Strategic Report or the Trustees' Report.

#### We have nothing to report in respect of the following matters in relation to which the Companies Act 2006 and the Charities Accounts (Scotland) Regulations 2006 requires us to report to you if, in our opinion:

- adequate accounting records have not been kept by the parent charity, or returns adequate for our audit have not been received from branches not visited by us; or
- the parent charity's financial statements are not in agreement with the accounting records and returns; or
- certain disclosures of trustees' remuneration specified by law are not made; or
- we have not received all the information and explanations we require for our audit.

## Responsibilities of Trustees

As explained more fully in the Trustees' Responsibilities Statement set out on page 43, the trustees are responsible for the preparation of the financial statements and for being satisfied that they give a true and fair view, and for such internal control as the trustees determine is necessary to enable the preparation of financial statements that are free from material misstatement, whether due to fraud or error.

In preparing the financial statements, the trustees are responsible for assessing the group's and the parent charity's ability to continue as a going concern, disclosing, as applicable, matters related to going concern and using the going concern basis of accounting unless the trustees either intend to liquidate the group or the parent charity or to cease operations, or have no realistic alternative but to do so.

#### Auditor's responsibilities for the audit of the financial statements

We have been appointed as auditor under Section 44(1) (C) of the Charities and Trustee Investment (Scotland) Act 2005 and under the Companies Act 2006 and report in accordance with regulations made under those Acts.

Our objectives are to obtain reasonable assurance about whether the financial statements as a whole are free from material misstatement, whether due to fraud or error, and to issue an auditor's report that includes our opinion. Reasonable assurance is a high level of assurance but is not a guarantee that an audit conducted in accordance with ISAs (UK) will always detect a material misstatement when it exists. Misstatements can arise from fraud or error and are considered material if, individually or in the aggregate, they could reasonably be expected to influence the economic decisions of users taken on the basis of the financial statements.

Irregularities, including fraud, are instances of non-compliance with laws and regulations. We design procedures in line with our responsibilities, outlined above, to detect material misstatements in respect of irregularities, including fraud. Based on our understanding of the group and the parent charity, and its industry, we identified that the principal risks of non-compliance with laws and regulations related to UK tax legislation, employment regulation, and fraud, and we considered the extent to which non-compliance might have a material effect on the financial statements.



We also considered those laws and regulations that have a direct impact on the preparation of the financial statements, such as the Companies Act 2006 and the Charities Act 2011.

We evaluated the trustees' and management's incentives and opportunities for fraudulent manipulation of the financial statements (including the risk of override of controls) and determined that the principal risks were related to posting manual journal entries to manipulate financial performance, inappropriately shifting the timing and basis of income recognition, management bias through judgements and assumptions in significant accounting estimates, in particular in relation to fund accounting, and significant one-off or unusual transactions.

**Our audit procedures were designed to respond to those identified risks, including non-compliance with laws and regulations (irregularities) and fraud that are material to the financial statements. Our audit procedures included but were not limited to:**

- discussing with the trustees and management their policies and procedures regarding compliance with laws and regulations;
- communicating identified laws and regulations throughout our engagement team and remaining alert to any indications of non-compliance throughout our audit; and
- considering the risk of acts by the group and the parent charity which were contrary to applicable laws and regulations, including fraud.

**Our audit procedures in relation to fraud included but were not limited to:**

- making enquiries of the trustees and management on whether they had knowledge of any actual, suspected or alleged fraud;
- gaining an understanding of the internal controls established to mitigate risks related to fraud;
- discussing amongst the engagement team the risks of fraud; and
- addressing the risks of fraud through management override of controls by performing journal entry testing.

There are inherent limitations in the audit procedures described above and the primary responsibility for the prevention and detection of irregularities including fraud rests with management.

As with any audit, there remained a risk of non-detection of irregularities, as these may involve collusion, forgery, intentional omissions, misrepresentations or the override of internal controls.

A further description of our responsibilities for the audit of the financial statements is located on the Financial Reporting Council's website at [www.frc.org.uk/auditorsresponsibilities](http://www.frc.org.uk/auditorsresponsibilities). This description forms part of our auditor's report.

**Use of the audit report**

This report is made solely to the charity's members as a body in accordance with Chapter 3 of Part 16 of the Companies Act 2006, and section 44(1)(c) of the Charities and Trustee Investment (Scotland) Act 2005, regulation 10 of the Charities Accounts (Scotland) Regulations 2006 (as amended) and with Part 4 of the Charities (Accounts and Reports) Regulations 2008. Our audit work has been undertaken so that we might state to the charity's members those matters we are required to state to them in an auditor's report and for no other purpose. To the fullest extent permitted by law, we do not accept or assume responsibility to anyone other than the charity and the charity's members as a body for our audit work, for this report, or for the opinions we have formed.

*Ian Holder*

**IAN HOLDER**

(Senior Statutory Auditor) for and on behalf of

**Mazars LLP**

Chartered Accountants and Statutory Auditor  
First Floor, Two Chamberlain Square,  
Birmingham, B3 3AX

24/08/2022

**CONSOLIDATED STATEMENT OF FINANCIAL ACTIVITIES**

**Income and expenditure account**

	Note	Unrestricted £000	Restricted £000	Total Group 2021 £000	Total Group 2020 £000
<b>Income</b>					
General donations		-		-	23
Membership subscriptions		360		360	412
Sponsorship and grants		15		15	189
Event income		4		4	5
Fundraising activity	2	11,440		11,440	157,467
Bank interest		79		79	112
Transfer from ANHSC				-	146
<b>Total income</b>		<b>11,898</b>	<b>-</b>	<b>11,898</b>	<b>158,354</b>
<b>Expenditure</b>					
Cost of generating funds	3	1,595		1,595	3,125
<b>Charitable expenditure</b>					
Membership services	4	1,547		1,547	514
Grants to members and cost of making grants	7	41,175	3,334	44,509	47,890
<b>Total expenditure</b>		<b>44,317</b>	<b>3,334</b>	<b>47,651</b>	<b>51,529</b>
Net income/(expenditure) for the period		(32,419)	(3,334)	(35,753)	106,825
Fund balances brought forward		102,825	4,000	106,825	-
<b>Fund balances at 31 December 2021</b>		<b>70,406</b>	<b>666</b>	<b>71,072</b>	<b>106,825</b>

The statement of financial activities includes all gains and losses in the year. All income and expenditure derive from continuing activities.

## BALANCE SHEETS

Company number 12325259 (Charity)

	Note	31/12/2021 Charity £000	31/12/2021 Group £000	31/12/2020 Charity £000	31/12/2020 Group £000
<b>Fixed assets:</b>					
Tangible assets	9	58	58	44	44
<b>Current assets:</b>					
Receivables	10	742	810	12,542	13,073
Short term investments and deposits	11	83,243	83,243	91,819	91,819
Cash at bank and in hand		2,254	2,302	2,071	2,080
Total current assets		86,239	86,355	106,432	106,972
<b>Liabilities</b>					
Amounts falling due within 1 year	12	13,181	13,151	184	191
Net current assets		73,058	73,204	106,248	106,781
Amounts falling due after 1 year	12	2,190	2,190	-	-
Net assets	14	70,926	71,072	106,292	106,825
<b>The funds of the charity</b>					
Unrestricted funds		4,497	4,643	375	908
Designated funds		65,763	65,763	101,917	101,917
Restricted funds		666	666	4,000	4,000
		70,926	71,072	106,292	106,825

Approved and authorised for issue by the Board and signed on its behalf



IAN LUSH

Chair

24/08/2022

The notes on pages 50 to 61 form part of these financial statements.

## CONSOLIDATED CASH FLOW STATEMENT

		Total funds 2021 £000	Total funds 2020 £000
<b>Cash flows from operating activities:</b>			
Net cash provided by (used in) operating activities	Table A	(8,376)	93,845
<b>Cash flows from investing activities:</b>			
Dividends and interest		79	112
Proceeds from the sale of investments		0	0
Purchase of investments		0	0
Investment in property and equipment		(57)	(58)
Net cash provided by (used in) investing activities		22	54
Change in cash and cash equivalents in the reporting period		<b>(8,354)</b>	<b>93,899</b>
Cash and cash equivalents at the beginning of the reporting period		93,899	0
<b>Cash and cash equivalents at the end of reporting period</b>	<b>Table B</b>	<b>85,545</b>	<b>93,899</b>
Table A: Reconciliation of net income/(expenditure) to net cash flow from operating activities			
<b>Net movement in funds for the period</b>		<b>(35,753)</b>	<b>106,825</b>
<b>Adjustments for:</b>			
Depreciation charges		43	14
Dividends, interest and rents from investments		(79)	(112)
Decrease/(Increase) in debtors		12,263	(13,073)
Increase in creditors		15,150	191
<b>Net cash (used in) provided by operating activities</b>		<b>(8,376)</b>	<b>93,845</b>
Table B: Analysis of cash and cash equivalents			
<b>Cash at bank and in hand</b>		<b>85,545</b>	<b>93,899</b>

# NOTES TO THE FINANCIAL STATEMENTS

## 1. ACCOUNTING POLICIES

### Basis of preparation

The financial statements are prepared under the historical cost convention, and in accordance with applicable accounting standards in the United Kingdom, the Statement of Recommended Practice (SORP) 'Accounting and Reporting by Charities' and Financial Reporting Standard (FRS) 102, together with the reporting requirements of the Companies Act 2006, the Charities Act 2011, the Charities and Trustee Investment (Scotland) Act 2005 and the Charities Accounts (Scotland) Regulations 2006.

These financial statements consolidate the results of the Charitable Company and its wholly owned subsidiary company ANC Trading Limited (company registration number 12608754). Uniform accounting policies are adopted across the Group and inter-company transactions are eliminated on consolidation. The operating results for the subsidiary are provided in note 15.

A separate Statement of Financial Activities for the Charity itself is not presented as allowed by Section 408 of the Companies Act 2006 and paragraph 5.1 of the SORP 2015. The income of the parent Charity was £11.7 million (2020: £157.8 million) and the expenditure was £47.6 million (2020: £51.5 million). The net deficit of the Charity was £35.9 million (2020: surplus of £106.3 million). The Charity has taken advantage of the exemption from preparing a Cash Flow Statement under FRS 102 Section 1.12(b). The cash flows of the Charity are included in the Consolidated Cash Flow Statement.

The Charity meets the definition of a public benefit entity under FRS 102. Assets and liabilities are initially recognised at historical cost or transaction value unless otherwise stated in the relevant accounting policy note(s).

### Critical accounting estimates and judgements

There are no material judgements or estimates applied in the preparation of these accounts.

### Going concern

The financial statements have been prepared on a going concern basis.

The organisation holds liquid funds sufficient to support its cash flow requirements over the foreseeable future under all scenarios. Therefore the Trustees consider there are no material uncertainties about the Charity's ability to continue as a going concern.

### Taxation

As a registered charity, the Charity benefits from business rates relief and is exempt from corporation tax on its charitable activities but not from VAT. Irrecoverable VAT is included in the cost of those items to which it relates. The subsidiary undertaking does not pay direct tax because its policy is to Gift Aid taxable profits to the Charity.

### Income

#### Legacy income

Pecuniary legacies are recognised as receivable once probate has been granted and notification has been received. Residuary legacies are recognised as receivable once probate has been granted, notification has been received and where they can be valued. Residuary legacies with a life interest are only valued where legal title has passed to the Charity.

#### Donation income

General donations, donations from fundraising events, corporate and philanthropy income, and direct marketing income are recognised in full in the Statement of Financial Activities when entitled, receipt is probable, and when the amount can be quantified with reasonable accuracy. Income received in advance is deferred where appropriate. Gift Aid receivable is included when claimable. No account is taken of monies or other assets in the hands of volunteer fundraisers until such monies are banked or other assets are received. Donated services and facilities are valued and included as income and expenditure, at the price the Charity estimates it would have paid in the open market for an equivalent service or facility that it would have purchased. A valuation of volunteer time and gratuitous gifts given to the Charity is not included in these financial statements.

#### Grant income

Grant income is credited to the Statement of Financial Activities when received or receivable, whichever is earlier, unless the grant relates to a specific future period, in which case it is deferred.

#### Membership subscriptions

Membership subscription income is recognised in the year to which it relates.

#### Income from trading activities

Income from trading activities is credited to the Statement of Financial Activities when received or receivable, whichever is earlier, unless it relates to a specific future period, in which case it is deferred. Income received in respect of raffles and lotteries is recognised when the draw is made. Income received in advance for future raffle and lottery draws is deferred until the draw takes place.

#### Investment income

Income from investments is recognised when received or receivable, whichever is earlier.

### Expenditure

Resources expended are recognised on an accruals basis in the period in which they are incurred. Expenditure on raising income includes the costs incurred in raising legacy income, donation income, grant income, and income from trading activities, including apportioned support costs. Expenditure on charitable activities comprises the costs incurred on charitable activities, including apportioned support costs.

### Allocation of expenditure

Resources expended are allocated to the particular activity to which the cost relates. Where expenditure contributes to more than one area of activity, the costs are allocated to each of the activities based on estimated staff time.

### Governance costs

Governance costs are the costs associated with constitutional and statutory requirements and with the strategic management of the Charity's activities.

### Redundancy and termination payments

Redundancy and termination payments are recognised when there is a demonstrable commitment on an individual or group basis that cannot be realistically withdrawn.

### Tangible assets

Tangible assets are stated at cost, net of cumulative depreciation and provision for impairment. Depreciation is charged in equal instalments over the life of each tangible asset at the following rates:

- furniture and equipment – 25%
- computer equipment and software – 25%
- leasehold property and leasehold property improvements – over the life of the lease

Items of equipment, motor vehicles and property are capitalised where the purchase price exceeds £1,000. Leasehold improvements are capitalised where the cost exceeds £10,000. Depreciation costs are allocated to activities on the basis of the use of the related assets in those activities. An impairment review is performed whenever the charity becomes aware that a significant event has occurred. Impairments are recorded in the SOFA as expenditure.

### Investments

Listed investments are included on the Balance Sheet at fair value, which is their closing bid price on the current or previous trading day. Unlisted investments are included on the Balance Sheet at their fair value. For unlisted funds, this is based on the Charity's share of the net asset value of the investments using the latest available performance data. Investments in subsidiaries are recorded at cost in the Charity's Balance Sheet.

Realised gains and losses on disposals in the year and unrealised gains and losses on investments at the Balance Sheet date are included in the statement of financial activities for the relevant underlying funds. All investment income is treated as unrestricted.

Current asset investments have a maturity date or expected disposal date of less than one year and are not held for long-term investment purposes.

### Programme-related social investments

Programme-related social investments are investments made in order to directly further the charitable purposes of the Charity.

Any financial return obtained is not the primary reason for making the investment. Programme-related social investments are held at cost, adjusted for impairment losses. Impairments in the value of programme-related investments are charged to charitable expenditure. Gains in the value of programme-related investments are credited to investment income.

Where the Charity has a significant interest in a programme related investment, it will be treated as either a joint venture or an associate, dependent on the level of control exerted by the Charity. Joint ventures and associates are included at cost, subsequently adjusted for the Charity's share in the associate's net assets under the equity method in the consolidated financial statements. The annual movement in the value of programme-related investments is shown as a separate category in the investments note.

### Cash and cash equivalents

Cash and cash equivalents includes cash in hand, deposits with banks, and funds that are readily convertible into cash at, or close to, their carrying values, but not held for investment purposes.

### Financial instruments

The Charity has applied the provisions of FRS 102, Section 11, 'Basic Financial Instruments' and Section 12, 'Other Financial Instruments Issues'. Financial assets and liabilities are recognised when the Charity becomes a party to the contractual provisions of the instrument. The Charity initially recognises a financial asset or a financial liability at transaction price – for debtors and other creditors this is the settlement amount. Grant commitments over one year are discounted to reflect present value.

### Stocks and property awaiting sale

Goods purchased for resale are valued at the lower of cost and net realisable value. Gifted properties awaiting sale are valued at their fair value, which is their expected sale price, less costs of sale. Properties awaiting sale are valued by an independent valuer who holds a relevant professional qualification and has relevant experience of both the class and location of the asset.

### Debtors and creditors

Trade debtors and other receivables are recognised at their transaction price less any allowance for doubtful debts. Liabilities are recognised when, as a result of past events, there is a probable future outflow of resources and the amount can be estimated reliably. Trade creditors and other payables are included at their nominal value.

### Grant commitments

Grants are made to organisations in furtherance of the Charity's grants policies. The full value of a charitable grant is recognised in the year in which the commitment is made and shown as a long or short-term creditor as appropriate. The discount applied to grant commitments not yet paid falling due after more than one year to adjust the valuation to its present value is the current base rate. Commitments are recognised on the date the Charity formally notifies the recipient of the award.

### Provisions

Provisions are recognised when the Charity has a present legal or constructive obligation as a result of a past event, it is probable that an outflow of resources will be required to settle the obligation, and the amount can be reliably estimated.

### Leases

Expenditure on operating leases is charged in the statement of financial activities as incurred.

### Fund accounting

Restricted, designated and general funds are separately disclosed. The different funds held are defined as follows:

#### Restricted funds

These are subject to specific restrictions imposed by the donor or by the nature of the appeal.

#### Designated funds

These are set aside at the discretion of the Trustees for specific purposes. They would otherwise form part of the general funds.

#### General funds

These are available to spend at the discretion of the Trustees in furtherance of the charitable objectives of the Charity.

Any transfers between funds and any allocations to and from designated funds are approved by Trustees. The cost of raising and administering such funds are charged against the specific funds.

#### Pensions

The Charity contributes to defined contribution pension schemes for its employees. Contributions to the schemes are charged to the statement of financial activities in the year in which they become payable.

## 2. FUNDRAISING ACTIVITY

	2021 £000	2020 £000
Covid-19 Urgent Appeal	5,022	156,914
Other fundraising	6,264	0
Donated merchandise	1	4
ANC Trading Ltd income	153	549
<b>Total</b>	<b>11,440</b>	<b>157,467</b>

## 3. COST OF GENERATING FUNDS

	2021 £ Support costs	2021 £	2020 £
Seconded, agency and professional staff	527,933	527,933	653,938
Online donation fees	85,826	85,826	1,899,478
Fundraising expenses	20,632	20,632	114,390
Advertising and marketing	818,810	818,810	366,708
Fundraising IT costs	25,952	25,952	13,820
Operational cost allocation	107,796	107,796	30,441
ANC Trading Ltd expenditure	7,712	7,712	15,775
<b>Total</b>	<b>1,594,661</b>	<b>1,594,661</b>	<b>3,094,550</b>

#### 4. MEMBERSHIP SERVICES

	2021 £ Support costs	2021 £ Governance Costs see Note 5	2021 £	2020 £ Support costs support	2020 £ Governance Costs see Note 5	2020 £
Staff costs	646,292	9,129	655,421	275,369	14,493	289,862
Seconded, agency and professional	343,778		343,778	37,933		37,933
Website	23,573		23,573	13,499		13,499
Recruitment expenses	63,115		63,115	38,770		38,770
Office costs	27,494		27,494	23,746		23,746
IT equipment, telephones and support	30,822		30,822	18,827		18,827
Printing, postage and stationery	14,959		14,959	5,080		5,080
Audit and banking fees	7,437	50,600	58,037	11,122	30,000	41,122
Travel and subsistence	7,832	282	8,114	4,219	427	4,646
Staff training and development	29,880		29,880	54		54
Other overheads	3,045	19,652	22,697	12,633		12,633
Special projects and membership support	251,766		251,766	50,520		50,520
Depreciation	17,692		17,692	2,675		2,675
ANC Trading Ltd set up fees			-	5,000		5,000
<b>Total</b>	<b>1,467,685</b>	<b>79,663</b>	<b>1,547,348</b>	<b>499,447</b>	<b>44,920</b>	<b>544,367</b>

#### 5. GOVERNANCE COSTS

	2021 £	2020 £
Staff costs	9,129	14,493
Audit fee	50,600	30,000
Trustee expenses	282	427
Insurance	19,652	-
<b>Total</b>	<b>79,663</b>	<b>44,920</b>

During 2021, £282 of expenses were paid to two Trustees (2020 £427 to two Trustees).

We estimate 5% £9,129 (2020 5% £14,493) of support staff costs relate to governance.

#### 6. AUDITOR'S REMUNERATION

The auditor's remuneration of £50,600 relates to the audit fee of £26,000 plus irrecoverable VAT of £5,200 (2020 £25,000, plus £5,000 irrecoverable VAT). £19,400 of audit costs in 2021 related to the 2020 Audit and were additional to the £30,000 accrued in the previous year. A further £5,000 (2020: £5,000) was paid for the audit and preparation of statutory accounts for ANC Trading Ltd.

#### 7. GRANTS TO MEMBERS

Grants are made to Member NHS Charities. An analysis of all grants awarded by region, is given below. The charity incurred grant making costs of £423,000 (2020: nil). A full breakdown of grants is available from the Charity and at [www.nhscharitiestogether.co.uk](http://www.nhscharitiestogether.co.uk)

Region:	2021 £	2020 £
East of England	4,682,954	4,305,860
London	7,320,127	7,047,644
Midlands	8,023,207	7,201,115
National	62,500	176,100
North East England and Yorkshire	5,298,951	7,433,700
North West England	4,045,533	5,544,855
South East England	6,272,651	5,383,856
South West	3,333,342	4,686,100
Northern Ireland	589,473	806,100
Scotland	3,196,532	3,590,669
Wales	1,260,508	1,713,900
<b>Total grants awarded</b>	<b>44,085,778</b>	<b>47,889,899</b>

Covid grants have been awarded in four stages:

##### Stage 1 – Urgent response grants (£42 million allocation; fully distributed):

Following an initial £35,000 support grant paid to all our Members, a further distribution was made based on NHS staff numbers. A final £50,000 was awarded to Members that had additional urgent needs. The full allocation has been distributed.

##### Stage 2 – Community partnership grants (£33 million allocation; £23.8 million awarded):

These grants are being made through Member Charities but are targeted at supporting the wider NHS and voluntary, community and social care sector in recognition of the impact of Covid-19 on the wider community.

##### Stage 3 – Recovery grants (£35 million allocation; £21.1 million awarded):

These grants are aimed at projects supporting the long recovery of the NHS.

##### Ambulance charity funding (£7 million allocated; £4.6 million awarded)

These grants are available to ambulance service charities across the UK to enable them to support areas like Community First Responder and other community focused projects that will result in measurable improvements in health outcomes for communities or services adversely affected by Covid-19.

At year end, application and approval processes were continuing for Stage 2, Stage 3 and Ambulance charity allocations. Further information on our grant programme and full details of grants paid to individual Member Charities can be found elsewhere in this report and at [www.nhscharitiestogether.co.uk](http://www.nhscharitiestogether.co.uk)

## 8. EMPLOYEES

Average number of employees	2021	2020
Direct charitable	27	5

Employment costs	2021 £	2020 £
Wages and salaries	1,134,843	244,047
Social security costs	117,909	22,815
Pension	109,704	23,000
Contracted and seconded staff	327,234	498,000
	<b>1,689,690</b>	<b>787,862</b>

There are no contractual termination payments included in the above (2020: £6,449).

The number of employees whose total earnings in the year (excluding employer pension contributions) fell into the bands below were:

	2021 Number	2020 Number
£80,001 - £90,000	3	0
£90,001 - £100,000	1	1

The Chief Executive Officer was the highest paid employee in 2021 and 2020.

The Charity considers its key management personnel comprise the Trustees, the Chief Executive Officer and the Senior Leadership Team.

The total employment costs of the key management personnel were £451,023 (2020 - £188,000).

Trustees received no remuneration.

## 9. TANGIBLE ASSETS

	Group Plant and machinery £000
<b>Cost</b>	
As 1 January 2021	58
Additions	57
As 31 December 2021	115
<b>Depreciation</b>	
As at 1 January 2021	14
Charge to 31 December 2021	43
As at 31 December 2021	57
<b>Net book value</b>	
As at 1 January 2021	44
As at 31 December 2021	58

## 10. RECEIVABLES

	2021 Charity £000	2021 Group £000	2020 Charity £000	2020 Group £000
Trade receivables	197	279	280	825
Other receivables	445	431	12,240	12,226
Prepayments	100	100	22	22
	742	810	12,542	13,073

Other receivables for the Group represent grants and donations notified but not yet received. For the Charity the loan to ANC Trading (£14,256) is included in Other receivables. All receivables were judged to be receivable within one year.

## 11. SHORT-TERM DEPOSITS AND BANK ACCOUNTS

	2021 Charity £000	2021 Group £000	2020 Charity £000	2020 Group £000
Short term investments and deposits	83,243	83,243	91,819	91,819
Current accounts	2,254	2,302	2,071	2,080
	85,497	85,545	93,890	93,899

## 12. PAYABLES

	2021 Charity £000	2021 Group £000	2020 Charity £000	2020 Group £000
<b>Payables due within 1 year</b>				
Trade payables	72	72	25	25
Accruals	32	37	56	61
Provision for grants awarded not yet paid	13,019	13,019	-	-
Pension and VAT	17	23	1	3
Intercompany	41	-	-	-
Deferred membership income	-	-	102	102
	<b>13,181</b>	<b>13,151</b>	<b>184</b>	<b>191</b>
<b>Payables due after 1 year</b>				
Provision for grants awarded not yet paid	<b>2,190</b>	<b>2,190</b>	-	-

## 13. COMMITMENTS

As at 31 December 2021, the Group had annual commitments under non cancellable operating leases as follows:

	2021 Equipment Hire £000	2020 Equipment Hire £000
Within 1 year	2	1
Between 1 and 5 years	9	4

## 14. ANALYSIS OF MAIN FUNDS AND PURPOSES

	As at 01-Jan-21 £000	Income £000	Expenditure £000	As at 31-Dec-21 £000
<b>Funds (Group)</b>				
Unrestricted	908	6,876	(3,142)	4,642
Designated – Covid appeal	101,917	4,945	(41,175)	65,687
Designated – staff wellbeing	-	77	-	77
Restricted	4,000	-	(3,334)	666
<b>Total funds</b>	<b>106,825</b>	<b>11,898</b>	<b>(47,651)</b>	<b>71,072</b>
<b>Funds (Charity)</b>				
Unrestricted	375	7,255	(3,134)	4,496
Designated – Covid appeal	101,917	4,945	(41,175)	65,687
Designated – staff wellbeing	-	77	-	77
Restricted	4,000	-	(3,334)	666
<b>Total funds</b>	<b>106,292</b>	<b>12,277</b>	<b>(47,643)</b>	<b>70,926</b>

### Designated funds

A designated fund has been set aside out of unrestricted funds by the Trustees representing the balance of the Covid appeal at year end.

This will continue to fund grants to help NHS Charities support NHS staff, volunteers and patients in ways above and beyond what NHS funding can ordinarily provide, from meeting immediate and urgent needs to supporting long term recovery from the impact of the crisis.

### Restricted funds

The balance of £666,000 in Restricted Funds is to be applied specifically to projects supporting NHS staff mental health.

Designated and restricted funds are held as current assets.

## 15. RELATED PARTY TRANSACTIONS

During 2020 the Charity made a loan of £14,256 to its wholly owned subsidiary, ANC Trading Ltd. The purpose of the loan was to cover legal set up costs and to provide working capital for the company. The interest rate charged on the loan is 2% above bank base rate. No portion of the loan was repaid during the year.

The Trustees were not paid and received no other benefits from the Charity or its subsidiary in the year. Two Trustees were reimbursed £281 (2020 Two Trustees - £426) for out-of-pocket travel expenses during the year. No Trustee received payment for professional or other services supplied to the Charity.

A majority of Trustees also held a post with a Member Charity that was eligible for and received member services and grants during the year. All Member Charities were allocated grant funds on an equitable basis and no part of any grants paid to a Member Charity directly benefited any Trustee.

The Charity purchased trustee indemnity insurance (£5 million cover) as part of a broader management liability package at a cost of £16,750 (2020 £15,740).

## 16. ANC TRADING LTD

The trading results for ANC Trading Ltd are given below:

	2021 £	2020 £
<b>Income</b>		
Trading income	152,934	548,659
<b>Total income</b>	<b>152,934</b>	<b>548,659</b>
<b>Expenditure</b>		
Professional advice	-	10,481
Operating costs	2,712	294
Audit fee	5,000	5,000
<b>Total expenditure</b>	<b>7,712</b>	<b>15,775</b>
Profit	145,222	532,884
<b>Balance sheet</b>		
Fixed assets	-	0
Current assets	171,222	553,971
Current liabilities	(25,999)	(21,086)
	145,223	532,885
Represented by		
Ordinary shares	1	1
Profit and loss accounts	145,222	532,884
	145,223	532,885

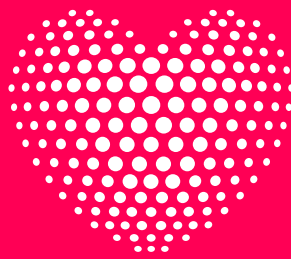
All profits were Gift Aided to the Charity after year end.

## LEGAL AND ADMINISTRATIVE INFORMATION

<b>Charity name</b>	Association of NHS Charities	Registered name
	NHS Charities Together	Known as/Trading name
<b>Trustees</b>	Keith Brooks	
	Chris Burghes	
	Amerjit Chohan	
	Tim Diggle	
	Jane Ferguson	
	Ian Lush OBE (Chair)	
	Jayne Mee	Appointed 22 Sept 2021
	Dame Gill Morgan	Appointed 22 Sept 2021
	Daniel Mortimer	Appointed 22 Sept 2021
	Amarjit Singh	Appointed 22 Sept 2021
	Kiki Syrad	Appointed 22 Sept 2021
	Kirsty Thomson	
	Antony Tiernan	Appointed 22 Sept 2021
<b>Chief Executive Officer</b>	Ellie Orton OBE	
<b>Senior Leadership Team</b>		
Director of External Affairs & Communications	Sarah Campion	
Director of Fundraising	Louise McCathie	
Director of Finance & Operations	Gemma Morgan	Appointed 14 Dec 2021
Business Services Director	Stuart Reynolds (Interim)	
Director of Membership & Impact	Richard Scarth	Resigned 30 April 2022
<b>Registered office and principal address</b>	Suite 68, Lake View House, Wilton Drive, Warwick CV34 6RG	
<b>Auditor</b>	Mazars LLP First Floor, Two Chamberlain Square, Birmingham B3 3AX	
<b>Bankers</b>	The Co-operative Bank PO Box, 250 Delf House, Southway Skelmersdale WN8 6WT	
<b>Solicitors</b>	Withers LLP 16 Old Bailey, London EC4M 7EG	
<b>Charity number</b>	1186569 (England & Wales) SC050716 (Scotland)	
<b>Company number</b>	12325259	



.....  
**VISIT OUR WEBSITE:**  
**[NHSCHARITIESTOGETHER.CO.UK](https://www.nhscharitiestogether.co.uk)**  
.....



**NHS  
CHARITIES  
TOGETHER**